

STATE OF OREGON
OFFICE OF EMERGENCY MANAGEMENT

CASCADIA PLAYBOOK

WORKING DRAFT
Version 3.0



© Copyright 2018, Oregon Office of Emergency Management

Oregon Office of Emergency Management

3225 State St Salem, OR 97301
503-378-2911



**This version of the Cascadia Playbook is a work in progress. Oregon's Office of Emergency Management is committed to making this a useful document and welcomes suggested edits and recommendations to improve its functionality. Please send suggestions to deputy@oem.state.or.us.*



KATE BROWN
Governor

September 1, 2018

Dear Emergency Management Partner,

Preparing for a Cascadia Subduction Zone earthquake and ensuing tsunami may seem like a daunting task, but each step we take to prepare helps make Oregon more resilient. The Cascadia Playbook is the blueprint for preparing for a large scale catastrophic event, but it also guides responses to other emergencies and incidents.

It has been over three years since the Oregon Office of Emergency Management first published the Cascadia Playbook. Since then, the Playbook has improved the resilience of state agencies and serves as a national model for preparedness and readiness. We have also learned quite a bit since the first edition of the Cascadia Playbook was released, and have gained important new insights from navigating both real-world events and training exercises.

The protocols included in the Cascadia Playbook helped emergency management partners work efficiently and collaboratively in response to the Mosier train derailment in 2016. The Playbook was also instructive during the massive and successful planning effort for the historic 2017 solar eclipse that attracted an estimated one million viewers from around the world. Even our multi-agency response to Oregon wildfires has been improved in thanks to the Playbook.

As Governor, keeping Oregonians safe and healthy is my top priority. Providing the structure for how response partners come together to address Oregonians' most urgent needs is the first step to keeping us all safe and informed in a catastrophic incident. The ongoing refinement of the Cascadia Playbook ensures coordinated efforts of local, tribal, state, and federal agencies with non-profit and private sector partners across Oregon and the country long into the future.

The Playbook accomplishes three essential functions:

- Prescribes the mission assignments to organize the efforts of the many partners within emergency response and recovery.
- Provides a checklist of time-based actions to be accomplished by teams of subject matter experts working collaboratively as Emergency Support Functions.
- Supports and provides organizational clarity to existing plans developed by the emergency management community across Oregon.

To protect the lives and property of Oregonians, we must be prepared to respond at any moment to this hazard and other emergencies, regardless of cause. I would like to thank those who participated in the Cascadia Rising exercise and all who contributed to this latest Cascadia Playbook. Your work saves lives, protects property and the environment, supports a more effective response, and helps the State of Oregon recover from its toughest challenges.

Governor Kate Brown

About The Cascadia Playbook

Playbook Structure:

- Covers the initial response timeframe
- For the first 14 days of the event
- Reflects content from the Oregon Cascadia Subduction Zone Plan, the FEMA Region X Cascadia Execution Checklist, and findings from the 2016 Cascadia Rising exercise
- Identifies decision-making structures and authorities to initiate response and ensure smooth operations
- Focuses on action items to create a punch list of missions for each “play”
- Is organized by Emergency Support Function (ESF)
- Supports existing plans developed by cities, counties, tribes, state and federal agencies
- Presents actions in a streamlined, easy-to-navigate document

The Cascadia Threat

A Cascadia event is based on the threat of a catastrophic magnitude 9.0 Subduction Zone earthquake and resultant tsunami. Coastal counties will experience a devastating tsunami on top of severe ground shaking (up to five minutes). Shaking intensity will be less in the I-5 Corridor and Southern, Central, and Eastern Oregon, but older buildings may incur extended damage.

Expected Impacts

- Ground shaking for 4-6 minutes causing massive critical infrastructure damage
- Liquefaction and landslides causing disruption of transportation routes
- Tsunami inundation to coastal areas with as little as 15 minutes warning
- Up to 25,000 fatalities resulting from combined effects of earthquakes and tsunami
- Tens of thousands of buildings and structures destroyed or damaged
- Tens of thousands of people in need of shelter because of destroyed or damaged households
- \$30+ billion in economic loss

High Impact Areas:

Curry, Coos, Douglas, Lane, Lincoln, Tillamook, and Clatsop counties

Mid-Range Impact Areas:

Metropolitan areas including Washington, Multnomah, and Clackamas counties; counties west of the Cascades (Josephine, Jackson, Douglas, Lane, Linn, Benton, Marion, Polk, Yamhill, and Columbia)



Initial response in the event of ...

Event +60 Minutes	Event +6 Hours	Event +12 Hours	Event +24 Hours	Event +48 Hours	Event +4 Days	Event +7 Days	Event +10 Days	Event +2 Weeks
PLAY 1	PLAY 2	PLAY 3	PLAY 4	PLAY 5	PLAY 6	PLAY 7	PLAY 8	PLAY 9
<ul style="list-style-type: none"> Initial notification Activate OERS 	<ul style="list-style-type: none"> Succession authorities Emergency declarations Life safety missions Search and rescue Medical care 	<ul style="list-style-type: none"> Emergency communications JIC operations 	<ul style="list-style-type: none"> Establish contact with affected areas and EOCs Situational awareness Establish shelters Support access and functional needs population Mass feeding Animal care 	<ul style="list-style-type: none"> Assess lifeline routes Establish state staging areas Locate/ receive supplies Points of distribution Emergency contracting 	<ul style="list-style-type: none"> Assess impact damage Identify critical service outages Prioritize emergency repairs Restore access to lifeline routes Fatality management operations 	<ul style="list-style-type: none"> Mobilize heavy equipment and personnel Prioritize repair of critical infrastructure systems 	<ul style="list-style-type: none"> Receive federal resources Volunteer and donated goods management Track federal assets and activation levels 	<ul style="list-style-type: none"> Identify regional and statewide priorities for restoration of community services, human services and critical infrastructure

DISASTER EVENT!





Disasters

Oregon's Emergency Management Functions

Response Phase

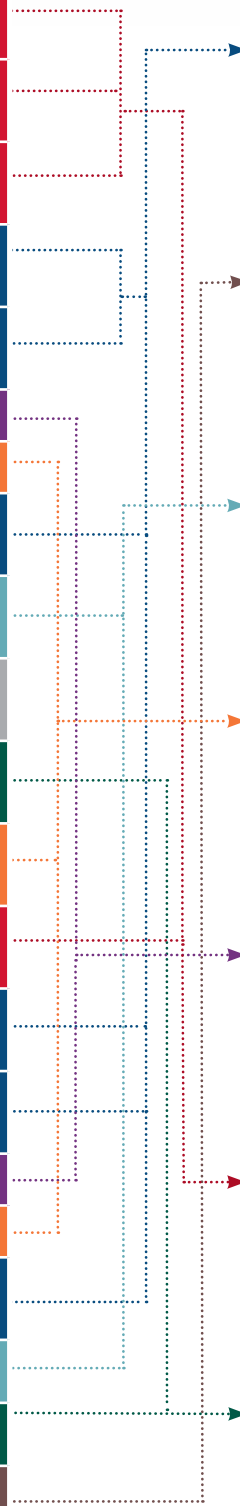
Emergency Support Functions (ESF)

ESF 1:	Transportation
ESF 2:	Communications
ESF 3:	Public Works
ESF 4:	Firefighting
ESF 5:	Information and Planning
ESF 6:	Mass Care
ESF 7:	Resource Support
ESF 8:	Health and Medical
ESF 9:	Search and Rescue
ESF 10:	Hazardous Materials
ESF 11:	Food and Water
ESF 12:	Energy
ESF 13:	Military Support
ESF 14:	Public Information
ESF 15:	Volunteers and Donations
ESF 16:	Law Enforcement
ESF 17:	Agriculture and Animal Protection
ESF 18:	Business and Industry

Recovery Phase

State Recovery Functions (SRF)

SRF 1:	Community Planning and Capacity Building (ESFs 4, 5, 7, 13, 14, 16)
SRF 2:	Economic Recovery (ESF 18)
SRF 3:	Health Services (ESFs 8, 17)
SRF 4:	Social Services (ESFs 6, 11, 15)
SRF 5:	Disaster Housing (ESFs 6, 15)
SRF 6:	Infrastructure Systems (ESFs 1, 2, 3, 12)
SRF 7:	Natural and Cultural Resources (ESFs 10, 17)





Oregon Emergency Support Functions (ESFs)



ESF 1
Transportation



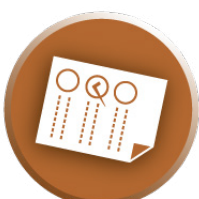
ESF 2
Communications



ESF 3
Public Works



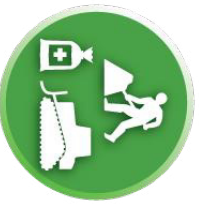
ESF 4
Firefighting



ESF 5
Information and
Planning



ESF 6
Mass Care



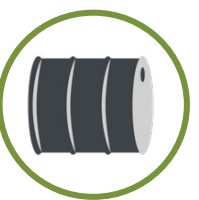
ESF 7
Resource
Support



ESF 8
Health and
Medical



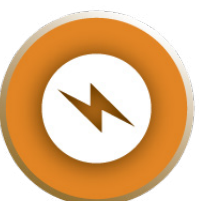
ESF 9
Search and
Rescue



ESF 10
Hazardous
Materials



ESF 11
Food and Water



ESF 12
Energy



ESF 13
Military
Support



ESF 14
Public
Information



ESF 15
Volunteers and
Donations



ESF 16
Law
Enforcement



ESF 17
Agriculture and
Animal Protection



ESF 18
Business and
Industry

Command and Decision Making Structure

NAME	AGENCY/ESF	CONTACT INFO	AUTHORITIES

PLAY 1: Event + 60 Minutes

PLAY 2: Event + 6 Hours

PLAY 3: Event + 12 Hours

PLAY 4: Event + 24 Hours

PLAY 5: Event + 48 Hours

PLAY 6: Event + 4 Days

PLAY 7: Event + 7 Days

PLAY 8: Event + 10 Days

PLAY 9: Event + 2 Weeks

Contact Information/Acronym List

(This page intentionally left blank)

PLAY 1:
Event + 60 Minutes

PLAY 1: Event +60 minutes



Objectives:

- **Make initial notifications**
- **Activate Oregon Emergency Response System (OERS)**

Statewide Priority Action 1.1 – Items to be completed prior to next Play Contact Governor, The Adjutant General (TAG), and Others per ORS 401.165

Significant ground shaking (up to 5+ min) or other disaster event - consider as initial notification

- Oregon Office of Emergency Management (OEM) Executive Duty Officer contacts TAG.
- OEM EDO contacts OEM Director.
- OEM EDO contacts OEM Deputy Director.
- OEM EDO contacts OMD Deputy Director.
- OEM EDO contacts Governor's Policy Advisor.
- OEM EDO contacts Chief Operating Officer.
- TAG contacts Governor.
- Governor contacts President of the US (POTUS) or DHS Secretary.
- TAG contacts National Guard Bureau (NGB).
- OEM Director contacts FEMA RX Administrator.
- NGB (or TAG) contacts NORAD/NORTHCOM Commander.
- OEM Duty Officer contacts the Federal Emergency Management Agency (FEMA) Region X 24/7 FEMA Bothell Operations Center.
- If Region X not available, contact FEMA Headquarters Watch Desk.

Statewide Priority Action 1.2 - Activate the Oregon Emergency Response System (OERS)

- OERS contacts OEM Executive Duty Officer.
- OEM EDO activates the ECC; if COOP activated, advises of alternate ECC location.
- OEM EDO determines communication capabilities and outages.
- OEM EDO establishes emergency communications with leadership, Emergency Support Function (ESF) agencies, counties and tribes.
- OEM ECC manager/OEM EDO ascertains initial size to determine ECC staffing plan and set up operational periods.
- OEM ECC Manager/OEM EDO sets up ECC rhythm.
- OERS contacts OEM staff.
- OERS contacts OERS Council.

ESF 1: Transportation

- Initiate agency COOP, assess staffing and capabilities of organization.



ESF 2: Communications

- Initiate agency COOP, assess staffing and capabilities of organization.
- Disseminate Emergency Alert System (EAS) Integrated Public Alerts and Warning System (IPAWS) messages.



ESF 3: Public Works

- Initiate agency COOP, assess staffing and capabilities of organization.



ESF 4: Firefighting

- Initiate agency COOP, assess staffing and capabilities of organization.



ESF 5: Information and Planning

- Initiate agency COOP, assess staffing and capabilities of organization.



ESF 6: Mass Care

- Initiate agency COOP, assess staffing and capabilities of organization.



ESF 7: Resource Support

- Initiate agency COOP, assess staffing and capabilities of organization.



ESF 8: Health and Medical

- Initiate agency COOP, assess staffing and capabilities of organization.
- Initiate immediate contact with Health and Human Services (HHS), FEMA Region X and Center for Disease Control (CDC) Operations Center to relay public health information.
- Establish virtual functionality of public health response via Hospital Capacity Web System (HOSCAP), Health Alert Network (HAN), State Emergency Registry of Volunteers in Oregon (SERV-OR), and Electronic Surveillance System.



ESF 9: Search and Rescue

- Initiate agency COOP, assess staffing and capabilities of organization.



ESF 10: Hazardous Materials



- Initiate agency COOP, assess staffing and capabilities of organization.

ESF 11: Food and Water



- Initiate agency COOP, assess staffing and capabilities of organization.
- Activate ESF 6/11 Agency Operations Center (AOC)
- Initiate contact with American Red Cross, Oregon Food Bank, and FEMA Region X.

ESF 12: Energy



- Initiate agency COOP, assess staffing and capabilities of organization.

ESF 13: Military Support



- Initiate agency COOP, assess staffing and capabilities of organization.
- Request activation of Civil Air Patrol (CAP).
- Initiate team to establish Command and Control in Redmond.

ESF 14: Public Information



- Contact OEM to determine agency status and direction.

ESF 15: Volunteers and Donations



- Initiate agency COOP, assess staffing and capabilities of organization.

ESF 16: Law Enforcement



- Initiate agency COOP, assess staffing and capabilities of organization.
- Initiate Oregon State Police (OSP) Mass Fatalities Incident Annex via the Medical Examiner's Division.
- Coordinate with ESF 2 to provide communications support.
- Coordinate with ESF 1 for transportation for law enforcement personnel and equipment.
- Support the coordination of communication frequencies with local law enforcement in impacted area.

ESF 17: Agriculture and Animal Protection



- Initiate agency COOP, assess staffing and capabilities of organization.

ESF 18: Business and Industry



- Initiate agency COOP, assess staffing and capabilities of organization.

(This page intentionally left blank)

PLAY 2:
Event + 6 Hours

PLAY 2: Event +6 hours



Objectives:

- **Assess staffing and facility status**
- **Initiate emergency declarations**
- **Determine lines of succession and authorities**
- **Save lives and protect public safety**
- **Provide lifesaving medical care and patient transport**
- **Disseminate public information and order evacuations**

Statewide Priority Action 2.1 – *Items to be completed prior to next Play* **Initiate State Emergency Declaration**

- TAG (or OEM Director) advises Governor to declare State of Emergency;
- If Governor not available:
- TAG (or OEM Director) advises Secretary of State (SoS) to declare; if SoS not available:
- TAG (or OEM Director) advises State Treasurer to declare

Statewide Priority Action 2.2 – *Items to be completed prior to next Play* **Request Major Disaster Declaration**

- OEM Executive Duty Officer activates the State Emergency Operations Plan.
- Governor (SoS/Treasurer) makes (verbal) request for Major Disaster Declaration via the Stafford Act to FEMA Region X (if not available, contacts FEMA Headquarters).

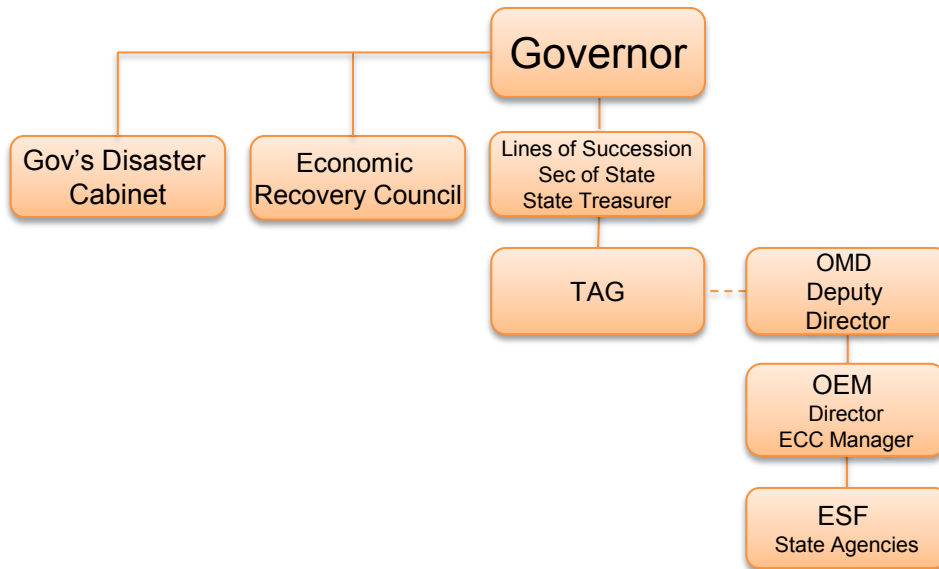
Statewide Priority Action 2.3 – *Items to be completed prior to next Play* **Assess State Emergency Coordination Center (ECC) Viability (Operational Status of Anderson Readiness Center)**

- OERS, in conjunction with the Oregon National Guard (ORNG) Joint Operations Center (JOC) assesses and reports facility condition to OEM Executive Duty Officer.
- If ECC is unusable due to severe utility outages or structural concerns, OEM EDO initiates Continuity of Operations Plan (COOP); the State ECC co-locates with the JOC at selected COOP location.
- Select alternate ECC facilities:
 - Oregon Department of Public Safety Standards and Training Academy
4190 Aumsville Hwy SE, Salem, OR, 97317;
10TEQ0350671026; 44.893° N, 122.956° W

- Army Aviation Support Facility #1 (Diebert Building)
1921 Turner Rd SE, Salem, OR, 97301;
10TEQ0019773151; 44.913° N, 122.998° W
- Oregon Youth Challenge Program Bend Campus
23861 Dodds Road, Bend, OR, 97701;
10TFP4984076367; 44.025° N 121.130° W

Statewide Priority Action 2.4 – *Items to be completed prior to next Play*
Determine Lines of Succession

- OEM Director confirms current lines of succession.



Statewide Priority Action 2.5 – *Items to be completed prior to next Play*
Determine Authorities for Decisions

- Governor – Declarations, executive orders, statewide priorities
- OEM Director – Execute statewide priorities
- Governor’s Disaster Cabinet (State Agencies)
 - Advise governor regarding statewide priorities
 - Determine criteria for resource allocation
 - Establish emergency funding
- Economic Recovery Council
 - Identify needs by geographic zones
 - Advise on economic priorities
 - Develop economic recovery plan

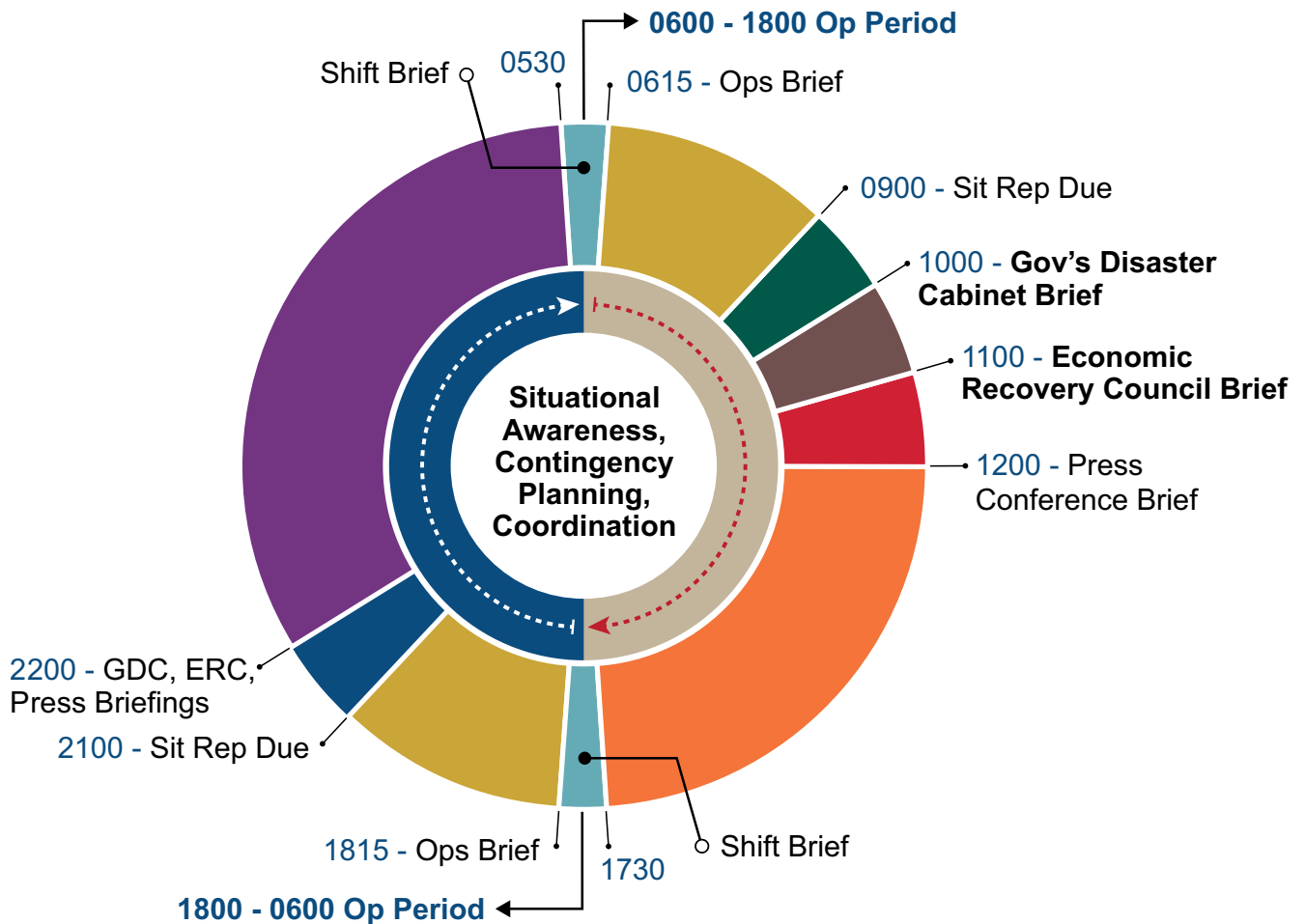
Statewide Priority Action 2.6 – Items to be completed prior to next Play
Emergency Support Functions (ESFs) and State Agencies Activate

- ESF leads report to ECC
 - State agencies with ESF function activate Agency Operations Centers
 - ESFs assess and report current capabilities to ECC Manager/OEM EDO

Statewide Priority Action 2.7 – Items to be completed prior to next Play
Establish Communication Structures for Disaster Information

- Establish and coordinate with Joint Information Centers (JICs) to develop and disseminate alerts and warnings and situational awareness information to the public.
- Establish ECC rhythm to cover the following briefings: Shift, operational, Disaster Cabinet, Economic Recovery Council, press conferences and media.

OEM ECC Rhythm





ESF 1: Transportation

- Facilitate resources needed to transport responders to impacted areas.
- Assist with evacuations and medical transport resources.
- Transport communication trailers to impacted areas.
- Coordinate aviation resources with ESF 13.
- Coordinate aerial assessment of shelters and supply staging areas.
- Deploy and engage various available messaging technologies (Variable Message Signs (VMS), Highway Advisory Radio (HAR)).
- Coordinate the flow of supplies, personnel and equipment to impacted areas.
- Coordinate and provide traffic control, evacuation assistance and aerial support of operations.
- Identify lifeline roadways, bridges and tunnels, and facilitate debris removal.
- Coordinate and support transport as needed.
- Provide barriers and signage to aid missions.
- Stabilize hazardous conditions to prevent additional injuries or damage to transportation infrastructure.
- Coordinate with the United States Coast Guard (USCG) to establish a Maritime Branch to facilitate operations in the coastal, navigable waterways.
- Coordinate the establishment of the Air Operations Branch (AOB) to facilitate operations involving air assets and environments.



ESF 2: Communications

- Establish communications with counties, cities, tribes, and utilities.
- Activate Emergency Alert System (EAS), Civil Air Patrol (CAP) and disseminate Integrated Public Alerts and Warning System (IPAWS) messages.
- Provide aerial repeater aircraft to support ground based communication with responders via CAP.
- Support and facilitate tactical communication needs of emergency responders.
- Expand communication services for transportation responders and disseminate public messages about transportation and evacuations.
- Establish amateur radio contact with impacted areas.
- Integrate amateur radio network to augment connectivity to Military Auxiliary Radio System (MARS), Radio Amateur Civil Emergency Service (RACES), and maritime VHF radio communities.



ESF 3: Public Works

- Provide mission critical information on geologic hazards as a result of the event.
- Stabilize hazardous infrastructure and systems to prevent additional injuries and/or damages.
- Coordinate public works and engineering resources to support lifesaving operations.
- Prioritize emergency repairs to restore critical systems for response operations and services for survivors.
- Coordinate with public/private sector service providers.
- US Army Corps of Engineers, (USACE) develop a local, tribal, state, and federal strategy for debris removal to include the development of priorities and allocation of debris removal resources.
- (USACE) Deploy teams and participate in debris management.
- (USACE) Provide expertise and resources to assist in the removal and disposal of contaminated and non-contaminated debris, to include animal carcasses and debris affecting Natural and Cultural Resources and Historic Properties (NCH) resources.
- (USACE) Identify flood control actions for failed levees, dams, and water/wastewater facilities.
- (USACE) Complete assessments of all projects, coordinate with appropriate stakeholders to prioritize, plan, and execute repairs to damaged projects and infrastructure.
- (USACE) Manage federal dams and ensure their safety.
- (USACE) Provide support to SAR via temporary emergency power, commodities, potable water, temporary housing, rapid temporary repair/roofing, critical public facilities, infrastructure assessment, and structural engineering support.
- (Mine Safety and Health Administration) Provide engineering services to determine the cause or location of an event - Time Frame (Mine Safety and Health Administration) Perform structural integrity analysis, and recommend hazard mitigation steps.
- (Dept. of Interior/Bureau of Reclamation) Provide engineering support to assist in evaluating damage to water control systems, such as dams, levees, and water delivery facilities and structures.
- (Dept. of Interior/Bureau of Reclamation) Provide personnel to assist in damage assessment, structural inspections, debris clearance monitoring, and restoration of facilities in general.

ESF 4: Firefighting



- Assess available statewide firefighting and incident management team assets.
- Establish contact with Oregon fire defense board chiefs to determine operational status and resource needs.
- Provide wildland fire suppression.
- Determine availability of aircraft and viable airports to assist with firefighting.
- Assist ESF 16 with establishment of evacuation routes.
- Assist with provision of interoperable communications.
- Support ESFs 8, 9, and 10 with rescue, emergency medical, and HAZMAT response operations.

ESF 5: Information and Planning



- Establish situational awareness and common operating picture (COP) for decision-makers.
- Collect and distribute response objectives, priorities and allocation plans for resources in the ECCAP.
- Coordinate with emergency managers throughout the state to receive incident situational awareness materials for situation report.
- Initiate planning timeline and rhythm in cooperation with operational period.

ESF 6: Mass Care



- Establish situational awareness. Request aerial/satellite assessment information with a focus on tsunami evacuation locations along the coast.
- Identify personnel for ECC and Governor's Disaster Cabinet operations.
- Establish necessary communication channels with ESF-8 and ESF-13 AOCs.
- Activate pre-designated mission packages.

ESF 7: Resource Support



- Identify, procure and coordinate available space for incident management activities.
- Analyze initial situational reports from local and tribal authorities to identify potential resource needs for immediate lifesaving support.
- Procure and coordinate resource deployment to provide specialized lifesaving assistance to local and tribal authorities.
- Provide logistic support to response operations (public health, medical, SAR, firefighting).
- Track status of response resources.
- Procure and coordinate Personal Protective Equipment (PPE) for survivors and responders.



ESF 8: Health and Medical

- Gather information to obtain situational awareness of patient numbers and categories.
- Establish contact with hospitals and county/tribal public health departments and Emergency Medical System (EMS) services.
- Prioritize and coordinate rapid needs assessment of critical health facilities, including reliance on power, potable water, and wastewater.
- Initiate immediate contact with Health and Human Services (HHS), FEMA Region X and Center for Disease Control (CDC) Operations Center to relay public health information.
- Establish virtual functionality of public health response via Hospital Capacity Web System (HOSCAP), Health Alert Network (HAN), State Emergency Registry of Volunteers in Oregon (SERV-OR), and Electronic Surveillance System for the Early Notification of Community-based Epidemics (ESSENCE).
- Analyze public health and medical assistance needs based on situational awareness.
- Mobilize professional and reserve medical personnel to assist in patient care.
- Coordinate medical logistic support (supplies, personnel and teams).
- Receive and distribute the Strategic National Stockpile (SNS).
- Implement fatality management protocols.
- Coordinate use of non-traditional facilities such as hotels, Ambulatory Surgery Centers, or containerized medical units to treat disaster survivors in impacted areas.
- Support ESF 6 in evaluating individuals with chronic medical, mental health or behavioral assistance needs that normally live independently.

ESF 9: Search and Rescue



- Coordinate communication and support needs of SAR operations.
- Coordinate SAR aircraft mission needs with Air Force Rescue Coordination Center (AFRCC).
- Request and coordinate Urban Search and Rescue (USAR) teams (FEMA).
- Identify and report PPE requirements for survivors and responders to ESF 7.

ESF 10: Hazardous Materials



- Establish contact with Regional Hazardous Materials Emergency Response Teams (RHMERT) to determine operational status and resource needs.
- Identify life threatening releases and prioritize locations to deploy teams to control and mitigate.
- Identify oil and hazardous materials incidents that need to be controlled and contained in impacted areas.
- Provide mass decontamination of survivors and responders.

- Identify need for evacuation due to hazardous materials and coordinate the establishment of bypass evacuation routes.
- Coordinate with special teams: OSFM State Hazardous Material Teams, ODOT Incident Response Teams, OHA Radiation Response Team, Civil Support Team (CST), Department of Environmental Quality (DEQ), local emergency responders and others.

ESF 11: Food and Water



- Establish situational awareness.
- Estimate affected population needing food, water and ice.
- Activate pre-designated mission assignments.
- Coordinate with ESFs 8, 12 and 13 on development of composite mission assignments.
- Coordinate with ESF 8 and 14 for food and potable water safety prevention messaging (boil water/food safety advisories).

ESF 12: Energy



- Establish and maintain communications with energy supplies (natural gas, petroleum, and electricity).

ESF 13: Military Support



- Designate Dual Status Commander and supporting staff.
- Engage in lifesaving actions under immediate response authority at individual unit commander's discretion.
- Assess availability of assets and deploy as requested in support of ESFs.
- Transport mobile Air Traffic Control (ATC) platforms to impacted areas.
- Execute helicopter pick-up for key personnel (pre-planned).
- Support the Air Operations Branch.
- Support ESF 4 with firefighting operations.
- Assist with and support SAR, lifesaving and air ambulance missions.
- Provide medical support equipment and personnel.
- Assist with casualty clearing and triage.
- Support debris clearance for lifesaving operations.
- Provide mass decontamination of survivors and responders.
- Support evacuations.
- Support law enforcement as requested.
- Support traffic control operations as requested.

ESF 14: Public Information



- Initiate public information alerts, warnings and safety messages within impacted areas.
- Develop, refine and update public messaging on life-sustaining information including evacuation routes, mass care locations and assembly areas.
- Notify Governor's communications staff of public safety messaging strategy.
- Establish ECC Joint Information Center (JIC) and coordinate Joint Information System (JIS) functions across the state to ensure standard messaging.
- Activate and deploy Oregon Emergency Public Information Collaborative (EPIC) members to ECC JIC.
- Interact with local, tribal, state, federal and Non-Governmental Organization (NGO) partners for information sharing.
- Inform elected and appointed officials, and public on response efforts.
- Support the development of and dissemination of messaging on movement restrictions and curfews.
- Activate VOST to monitor and report public information trends, rumors, and life safety issues to ESF 5.
- Distribute information on survivors and reunification programs.

ESF 15: Volunteers and Donations



- Coordinate with humanitarian groups (VOADs, COADs) able to provide logistic support to lifesaving operations.
- Initiate volunteer and donations management plans.
- Establish and maintain staffing for a hotline for donations.

ESF 16: Law Enforcement



- Protect life and public safety.
- Initiate Oregon State Police (OSP) Mass Fatalities Incident Annex via the Medical Examiner's Division.
- Provide security for responders.
- Provide security for critical facilities, critical infrastructure and essential supplies.
- Coordinate traffic control and crowd control and assist with evacuations.
- Coordinate with ESF 2 to provide communications support.
- Coordinate with ESF 1 for transportation for law enforcement personnel and equipment.
- Support the coordination of communication frequencies with local law enforcement in impacted areas.
- Provide just-in-time training to security personnel (private contractors, military).

ESF 17: Agriculture and Animal Protection



- Implement pre-determined plan for public education about animal safety.
- Coordinate with ESF 15 to develop volunteer program for disaster assistance for impacted animals (pets, livestock).
- Notify personnel and contact volunteers based on current plan.
- Assist with prevention, identification and control of high consequence and zoonotic diseases.
- Coordinate with ESF 8 to identify and address human safety and health risks due to animals.

ESF 18: Business and Industry



- Communicate with private sector organizations to determine need and/or capabilities to support life safety operations.
- Determine and communicate to ESF 7 needs to help facilitate effective use of private sector resources.

PLAY 3: **Event + 12 Hours**

PLAY 3: Event +12 hours



Objectives:

- **Establish emergency communications**
- **Establish Joint Information Center (JIC) operations**

ESF 1: Transportation



- Collect and provide information on miles of roads assessed and % of bridges, and airports restored
- Assess, identify a minimum of 3, clear and establish lifeline routes.
- Facilitate the transportation of support equipment to impacted areas.
- Facilitate the deployment of damage assessment teams to impacted areas.
- Assist ESF 13 and Department of Aviation to maintain air traffic control for damage assessment missions.
- Assess usability of Oregon airports for response missions.
- Coordinate with USCG, US Army Corps of Engineers (USACE), Civil Aviation Authority (CAA) and National Oceanic and Atmospheric Administration (NOAA), on damage assessment and initial repairs of shipping channels, harbors, ports and inland waterways.
- Coordinate with USCG, USACE and Department of Defense (DoD) to identify alternate locations for oceangoing and riverine support.
- Support response priorities in the Columbia River and coastal ports, including vessel removal, marine debris removal, emergency dredging, and hydrographic surveys.
- Assist with the acquisition of private sector resources (aircraft, response vehicles, engineering, fuel, and repair equipment).

ESF 2: Communications



- Collect and provide information on % of state population with cellular phone service restored and gaps.
- Assess communication capability of operations centers within impacted areas.
- Assess capability and availability of systems and identify gaps and solutions to support tactical communication needs (telephone, cable, fixed and mobile wireless, cable landing sites).
- Establish a tactical method of communication and complete system viability assessments based upon identified priorities within 12 hours.

- Identify surviving communication capabilities and availability and direct tactical repairs using both typical and atypical means of communication.
- Determine support capabilities for local, tribal and NGO partners.

ESF 3: Public Works



- Collect and provide information on % of state population with and without water and wastewater services.
- Coordinate debris removal in support of damage assessment missions.
- Provide operational assessment of critical pipeline systems.
- Coordinate teams to assess public works infrastructure vulnerabilities, and to support rapid needs assessment.
- Assist local and tribal jurisdictions with potable water and wastewater system assessments.
- Communicate and make recommendations on assessment, inspection, debris removal, repair and restoration, and fuel needs.
- Coordinate with ESF 18 to establish contact with private sector organizations and businesses who can provide qualified building inspectors.

ESF 4: Firefighting



- Coordinate and prioritize the most appropriate staffing configuration of IMTs to impacted areas.
- Coordinate aircraft to assist with aerial assessment of impacted areas.
- Identify and report PPE requirements of survivors and responders to ESF 7.

ESF 5: Information and Planning



- Collect and analyze available assessments, impacts to the response, infrastructure, populations and repair and restoration objectives/estimates for use in situation reports and ECCAPs.
- Develop and distribute situation reports.

ESF 6: Mass Care



- Collect situational awareness on available assets for commodities movement.
- Establish life line routes with ESFs 1, 3, 7, 8, 12 and 13 for movement of emergency relief commodities.
- Collect and provide information on % of state population within 15 miles of CPOD and operating shelters.

ESF 7: Resource Support



- Identify (from pre-developed lists) locations of surviving resources to assist response efforts.

- Support the deployment of teams to conduct assessments of critical infrastructure.
- Assess and report the status of Points of Distribution (POD) locations.

ESF 8: Health and Medical



- Collect and provide information on hospitals assessed, % operational, and % of available bed capacity.
- Collect and provide information on statewide fatalities and % recovered.
- Initiate contact with hospitals and local/tribal public health departments.
- Initiate immediate contact with HHS, FEMA Region X and CDC Operations Center to relay critical public health information to federal agencies.
- Establish virtual functionality of public health response (HOSCAP, HAN, SERV-OR, ESSENCE).
- Analyze and prioritize public health and medical assistance needs based on situational awareness.
- Coordinate use of non-traditional facilities to treat disaster survivors in impacted areas.
- Manage continuity of public health operations.
- Coordinate EMS assets and facilitate redeployment of assets.
- Identify critical medical facility energy shortfalls and report to ESF 12.

ESF 9: Search and Rescue



- Report any damages or areas of concern observed during airborne SAR missions.

ESF 10: Hazardous Materials



- Coordinate with ESF 8 for assessments and technical support about public health threats related to oil and hazardous material releases.
- Prepare and report initial hazardous material contamination assessments.
- Visually assess the structural safety of oil and hazardous material storage facilities in impacted areas.

ESF 11: Food and Water



- Collect situational awareness on available assets for commodities movement.
- Establish life line routes with ESFs 1, 3, 7, 8, 12 and 13 for movement of emergency relief commodities.
- Determine need and availability of potable prepacked drinking water.
- Coordinate with ESF 18 to determine availability of retail stores to provide food and potable water to impacted communities.

ESF 12: Energy



- Collect and provide information on % of state population with and without electric and gas services.
- Coordinate and assess impact to energy infrastructure and suppliers, estimating repair timelines, population impacted.
- Determine fuel availability and backup capabilities at system level.
- Support mass care operations' power generation status and needs.
- Coordinate with all ESFs to assess backup power generation, fuel needs and capabilities.

ESF 13: Military Support



- Provide assets for aerial assessment.
- Assess and report surviving personnel, facilities and equipment.
- Provide air traffic control assistance as needed.
- Provide coastal runway/landing zone usability assessment.
- Initiate requests of federal assets identified to assist missions assigned to the Oregon National Guard (ORNG).

ESF 14: Public Information



- Identify communication capabilities and methods to support public messaging.
- Update Governor's communications staff regarding available public information resources, limitations and strategies.
- Disseminate public messages about health and safety.
- Leverage crowdsourcing capabilities, tools and trends about damages in impacted areas.
- With subject matter experts, provide translation of emergency information to non-English speaking and access and functional needs populations.

ESF 15: Volunteers and Donations



- Assess the capabilities of humanitarian groups within Oregon.
- Collect damage assessment information from volunteer field teams and report to ESF 5.
- Coordinate with JIC to develop public service announcements on how and what to donate and how to volunteer.



ESF16: Law Enforcement

- Establish contact with local law enforcement in the impacted areas to determine public safety facility damage, response capability and needs, and status of critical facilities.
- Establish contact via ESF 13 with USCG to obtain security status of maritime assets and to coordinate port security and port law enforcement.
- Monitor, analyze and report on threats, social disruptions, criminal activity, and hot spots.



ESF 17: Agriculture and Animal Protection

- Identify and assess needs and capabilities of known animal and veterinary facilities.
- Assess agriculture point sources to determine risks to human health and safety.
- Assess impacts to the agriculture industry to include livestock, produce and crops.



ESF 18: Business and Industry

- Coordinate with local and tribal jurisdictions on private sector damage assessments.
- Coordinate with private sector partners to determine communication outages and status of backup resources (generators, fuel).
- Provide technical assistance as requested.
- Coordinate with businesses, industry partners, and ESF 10 to identify hazardous material impacts and other damages.
- Coordinate with ESF 3 and private sector resources and prioritize structural damage assessments for re-occupying buildings.
- Provide economic damage assessments for impacted areas.

(This page intentionally left blank)

PLAY 4:
Event + 24 Hours

PLAY 4: Event +24 hours



Objectives:

- **Establish contact with impacted areas and Emergency Operations Centers (EOCs)**
- **Gain situational awareness and determine public health threats**
- **Establish and support mass care operations**
- **Provide transportation, equipment and services to support access and functional needs populations**
- **Provide medical care at designated locations**
- **Establish and maintain mass feeding operations**
- **Provide resources for sheltering and care of animals**

ESF 1: Transportation



- Deploy and engage various available messaging technologies (Variable Message Signs [VMS], Notice to Airmen [NOTAM], Highway Advisory Radio [HAR]).
- Coordinate the establishment of the Air Operations Branch (AOB) to facilitate operations involving air assets and environments.
- Identify and mobilize heavy equipment and personnel needed for repairs.
- Institute temporary vehicle restrictions.
- Produce and distribute situation status reports.
- Coordinate aerial reconnaissance for observation of damaged areas, including viewing, the condition of pre-sited open areas, pre-identified facilities, and any other standing facilities that could serve for mass care operations.
- Coordinate the transportation of mass care operations and personnel to impacted areas.
- Assist with evacuations and medical transport for access and functional needs population to shelters.
- Identify lifeline roadways, bridges and tunnels vital to mass care operations and facilitate debris removal.
- Provide transportation support to re-supply mass care facilities.

ESF 2: Communications



- Establish and maintain voice and data capability of all mass care operations.

- Coordinate temporary communication capabilities to improvised, unofficial shelters.
- Identify needs and support for Information Technology (IT) for mass care efforts.
- Coordinate IT assistance to state agencies that support mass care operations.
- Establish positive contact with each of the 36 counties and 9 tribes.
- Collect Command/Control/Comms/Assessment element for county and Tribal EOCs.

ESF 3: Public Works



- Develop strategies for provision of potable water and management of wastewater in impacted areas.
- Provide structural safety assessment of mass care operations to include Americans with Disabilities Act (ADA) accommodations.
- Provide critical information on earthquake related hazards to ensure safety of mass care operations.
- Coordinate debris removal in support of mass care operations.
- Coordinate with public and private sector service providers.
- Provide critical information on earthquake related hazards to ensure safety of mass care operations.

ESF 4: Firefighting



- Provide guidance to help ensure fire safety for mass care operations.
- Assess statewide water supply and fuel needs to support ongoing firefighting operations.
- Deploy available IMTs following Fire Service Mobilization Plan.

ESF 5: Information and Planning



- Collect and provide information on requests for resources, and action status.
- Collect ESF action financial impact.
- Initiate the ECC planning and reporting timelines, processes, and distribution of situation reports and ECCAP.
- Acquire and disseminate weather forecasts.
- Schedule and facilitate situational status and ECCAP meetings.
- Establish information sharing point of contact for report and GIS data.

ESF 6: Mass Care



- Initial assessment of sheltering and feeding needs for impacted areas.
- Determine capability gaps with partners, to include the American Red Cross (ARC), NGOs, and community groups (churches) to manage mass care operations.
- Provide information to ESF 5 on shelter locations via situational status reports to be distributed to all ESF's.

- Assess and report statewide mass care status and needs.
- Establish mechanism for population of unaccompanied children for protection services, including support for welfare and developmentally disabled assistance, and child health.
- Identify specific risks or issues for pregnant or nursing women, infants and young children, and recommend appropriate solutions.
- Establish mechanism for elder care and other access and functional needs populations.
- Identify temporary housing availability.
- Coordinate with agencies and organizations to provide shelters, personnel and food.
- Coordinate with ESF 11 on diversion of feeding resources from federal programs.
- Establish mechanism to assist with evacuees and reunification efforts.
- Identify the locations and needs and support survivors who are not in mass care operations (either sheltering at home, isolated, or in improvised or unofficial shelters).
- Coordinate with ESF 8 for medical needs of shelters.

ESF 7: Resource Support



- Coordinate procurement of supplies and resources to support mass care operations.
- Coordinate the use of available space for alternative mass care operations.
- Coordinate deployment of mobile feeding resources with ESF 6.
- Coordinate with local and tribal jurisdictions on mass care resource needs.

ESF 8: Health and Medical



- Establish amateur radio contact with impacted areas.
- Analyze public health and medical assistance needs based on situational awareness.
- Produce and distribute situation status reports.
- Analyze and prioritize public health and medical assistance needs based on situational awareness.
- Assess and report the medical infrastructure needs of hospitals, trauma centers and health clinics.
- Activate SERV-OR.
- Identify, coordinate and support medical needs and public health needs of mass care operations and county/tribal public health departments, state agencies, nonprofits and EMS services.
- Arrange for evacuation of access and functional needs populations out of general population shelters to ensure effective care.
- Track EMS assets and facilitate redeployment of assets on a mission essential basis.

ESF 9: Search and Rescue



- Assist with transport of injured persons recovered in search and rescue operations.
- Request loudspeaker aircraft from CAP.
- Mobilize national urban search and rescue teams to search for survivors.
- Request and coordinate aircraft to search for survivors.
- Track SAR activities and mission status and report information to ESF 5.
- Mobilize federal personnel and aircraft to aid response efforts from Joint Personnel Recovery Center (JPRC).
- Continue federal SAR capabilities via Air Force Rescue Coordination Center (AFRCC).
- Coordinate with FEMA for Catastrophic Incident SAR (CISAR) missions.

ESF 10: Hazardous Materials



- Initiate control and containment of oil and hazardous materials spills or releases in impacted areas.
- Coordinate with ESF 8 for assessments and technical support about public health threats related to oil and hazardous material releases.

ESF 11: Food and Water



- Coordinate with county officials, ESFs 6 and 7 to ensure ample and timely deliveries of food, potable water and ice supplies.
- Oversee the inventory of food, potable water and ice resources.
- Coordinate with ESF 6 for the provision of culturally and medically appropriate food and water for mass care operations.
- Coordinate the provision of animal food for mass care operations.
- Ensure the safety and wholesomeness of food and potable water for mass care operations.

ESF 12: Energy



- Coordinate the allocation of fuel to support mass care operations.
- Identify power generation status/needs of mass care operations.
- Assess and provide power generation equipment and fuel to mass care operations.

ESF 13: Military Support



- Support debris clearance for lifesaving operations.
- Provide mass decontamination of survivors and responders.
- Support security for mass care operations as requested.

- Deploy potable water storage, distribution and purification systems.
- Contact State Emergency Preparedness Liaison Officer (SEPLOs) for mass care operations equipment.
- Coordinate with Defense Coordination Element (DCE) for military support, including Civil Air Patrol.
- Transport mobile Air Traffic Control (ATC) platforms to impacted areas.
- Support ESF 4 with firefighting operations.
- Support evacuations.
- Initiate requests of federal assets identified to assist missions assigned to the ORNG.
- Provide mass care operations supplies from contingency stock.
- Assist movement of equipment and supplies to affected areas (via air, water and land).
- Provide heavy road clearance and construction equipment and personnel to support and engage in repair missions.
- Establish command and control structure at pre-designated location for any county that has not made positive contact with the State ECC.
- Provide planning support, subsistence, administrative supply, petroleum product, engineering and construction supply, water and mobile units, medical material, telecommunications management, and transportation management support when DoD approved.

ESF 14: Public Information



- Brief Governor's communications staff and all PIOs on status of response efforts, mass care operations, available resources and messaging strategies.
- Submit situation status reports to ECC.
- Coordinate public information with federal partners.
- Interact with local, tribal, state, federal and Non-Governmental Organization (NGO) partners for information sharing.
- Determine messaging strategy to media.
- Coordinate with news media inside and outside the impacted areas (official web sites, social networking platforms) to widely disseminate incident updates and information.
- Disseminate mass care operations location information to the public.
- Disseminate animal sheltering information to the public.
- Brief Governor's communications staff and all PIOs on status of mass care operations and messaging strategies.
- Coordinate with ESF 2 to support the establishment of temporary two-way communication via hastily formed networks.
- With partner agencies, prepare and deploy translators to assist with non-English speaking public.

ESF 15: Volunteers and Donations



- Coordinate with humanitarian groups to utilize volunteers in support of other ESFs.
- Develop agreements with resource donors, as appropriate.

ESF 16: Law Enforcement



- Coordinate and assist with evacuation of adult and juvenile detention centers.
- Support operational and tactical security planning and operations for staging areas, PODs and SNS locations.
- Coordinate traffic and crowd control as needed.
- Coordinate critical stress incident management and peer support to first responders.
- Provide threat assessment and security intelligence for staging areas and PODs.
- Coordinate security for mass care and medical operations.
- Coordinate and assist with evacuation of adult and juvenile detention centers.
- Coordinate critical stress incident management and peer support to first responders.

ESF 17: Agriculture and Animal Protection



- Implement pre-determined plan for public education about animal safety.
- Notify personnel and contact volunteers based on current plan.
- Coordinate with ESF 6 to determine information on animal shelter locations and management needs.
- Coordinate with NGOs for rescue, sheltering, transport and re-homing.
- Coordinate veterinary medical care and animal sheltering.
- Coordinate with ESFs 6 and 14 to disseminate animal shelter locations.

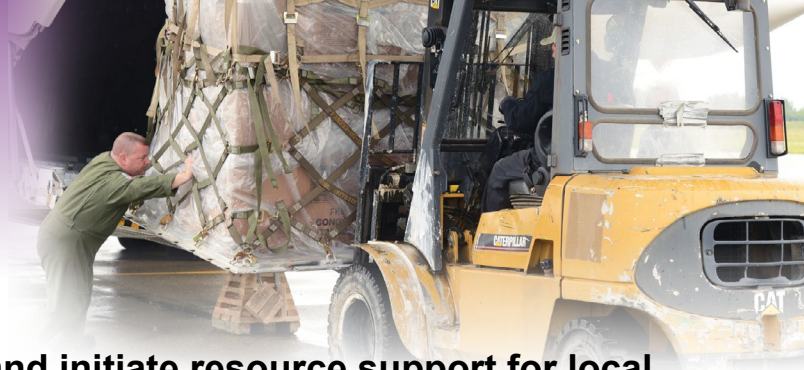
ESF 18: Business and Industry



- Identify a senior representative from the business community to support the State ECC.
- Determine and communicate to ESF 7 needs to help facilitate effective use of private sector resources.
- Identify and prioritize available private industry resources.
- Locate and coordinate the use of available private sector space for mass care activities.
- Engage grocery chains and other retailers to expedite re-opening/re-supply of stores in impacted areas to support displaced populations.

PLAY 5: **Event + 48 Hours**

PLAY 5: Event +48 Hours



Objectives:

- **Identify needs, and prioritize and initiate resource support for local, tribal and NGO partners**
- **Establish and manage state staging areas**
- **Locate and receive supplies, equipment, services, technical specialists and facilities**
- **Distribute food, potable water, and other commodities to Points of Distribution (PODs) and local staging areas**
- **Initiate emergency contracts**
- **Assess lifeline routes**

ESF 1: Transportation



- Identify transportation and logistical requirements to support projected evacuation of survivors and pets.
- Develop transportation resource list for availability and needs (additional transportation support, repair equipment and personnel).
- Obtain waivers for driver restrictions, weight limits and oversize vehicles on public roadways to support emergency transportation efforts.
- Coordinate the identification and opening of alternate transportation routes (air, ground, water) to support logistics operations.
- Provide signage and barriers for logistics operations.
- Request security escorts for commodities movement into impact area.
- Identify lifeline roadways, bridges and tunnels and facilitate debris removal.
- Coordinate with ESF 7 and ESF 13 to acquire private sector and military aircraft, response vehicles, engineering, fuel and repair assistance to facilitate life safety operations.
- Assess usability of Oregon airports for response missions.
- Identify lifeline roadways, bridges and tunnels vital to shelter operations and facilitate debris removal.
- Coordinate with US Department of Transportation (DOT).
- Coordinate transportation routing for Search and Rescue (SAR) teams and equipment.
- Coordinate and support transport as needed.
- Coordinate with the United States Coast Guard (USCG) to establish a Maritime Branch to facilitate operations in the coastal, navigable waterways.

- Assist with ESF 13 and Department of Aviation [AREO] in the maintaining of air traffic control for damage assessment missions.
- Provide transportation support to re-supply shelters.
- Institute temporary vehicle restrictions.
- Initiate the reestablishment of airports and enact flight restrictions (coastal priorities).

ESF 2: Communications



- Develop and support methods to request, respond and facilitate request for resources when normal communications are non-functional.
- Determine support capabilities to local and tribal governments and coordinate supplemental resources needed.
- Provide and maintain voice and data communications support to state staging areas.
- Maintain tactical communications resources to support response and recovery operations.
- Establish communications with voice, data and IT vendors and contractors and facilitate their deployment.

ESF 3: Public Works



- Stabilize hazardous infrastructure and systems to prevent additional injuries and/or damages.
- Prioritize emergency repairs to restore critical systems for response operations and services for survivors.
- Assist local and tribal jurisdictions with assessments of potable water and wastewater systems.
- Communicate and make recommendations on assessment, inspection, debris removal, repair and restoration, and fuel needs.
- Establish contact with private sector organizations and businesses who can provide qualified building inspectors.
- Provide structural safety assessment of mass care operations to include Americans with Disabilities Act (ADA) accommodations.
- Reassess public works infrastructure and systems following aftershocks.
- Establish Critical Infrastructure Task Force to prioritize, repair and restore critical systems to support emergency response operations and services to survivors.
- Prioritize restoration of systems and infrastructure.
- Support utility needs of state and local staging areas and PODs.
- Identify public works and engineering resource needs.
- Identify and resolve regulatory issues that may obstruct repair efforts.

ESF 4: Firefighting



- Coordinate, prioritize, and deploy most suitable configuration of Incident Management Teams (IMTs) to impacted areas.
- Assist with provision of interoperable communications.
- Identify and coordinate firefighting resource needs.
- Coordinate Fire Camp capabilities for alternate needs.

ESF 5: Information and Planning



- Collect and distribute plans for resource distribution.
- Collect and develop situational information to support Director's briefings for Governor's Disaster Cabinet.
- Establish international liaison POC.

ESF 6: Mass Care



- Register, notify, transport and shelter access and functional needs populations needing assistance.
- Coordinate with ESF 3 to prioritize surviving facilities for potential use for mass care operations.
- Coordinate with ESF 11 on diversion of feeding resources from federal programs.
- Coordinate with ESF 8 for medical needs of shelters.
- Establish coordination activities with ESF 15.
- Identify, prioritize and coordinate resource requests to support/sustain local and tribal mass care operations.
- Identify and request specific resources necessary to provide mental health services and the access and functional needs of individuals receiving mass care services.
- Coordinate and prioritize resource requests for the provision of temporary or short-term emergency housing for impacted residents.
- Report requirements for type, quantity, and delivery locations of emergency potable water and food for shelters.

ESF 7: Resource Support



- Notify state agencies that their resources (personnel, equipment) may be used.
- Identify and prioritize resource requests from local, tribal, state and NGO partners.
- Maintain an available resource list of state agency resources and capabilities.
- Maintain emergency resource vendor contacts to support response efforts.
- Coordinate location of distribution facilities and identify alternate sites.
- Coordinate delivery of supplies and establish supply chains.

- Locate and purchase resources.
- Coordinate, establish, and manage state staging areas.
- Establish and operate logistics support facilities to include the management of services related to lodging and feeding of incident response, support, and volunteer personnel.
- Identify and prioritize available lodging for responders.
- Track resources requests including the movement of assets and personnel.
- Facilitate EMAC requests and other out-of-state requests.
- Track and manage the distribution of supplies to PODs.
- Establish resource tracking, financial tracking, reimbursement and accounting systems.
- Locate and coordinate space for incident management and warehousing operations.
- Coordinate with ESF 16 for security of staging areas, warehouses, PODs, and supply convoys.
- Procure and coordinate delivery of sanitation resources (dumpsters, hand wash stations, portable toilets) to impacted areas.
- Procure through lease or purchase additional boats and vessels to meet tasks of ferrying population or transferring supplies.
- Establish a fuel distribution network.

ESF 8: Health and Medical



- Maintain list of private sector medical suppliers.
- Establish virtual functionality of public health response (HOSCAP, HAN, SERVOR, ESSENCE).
- Manage continuity of public health operations.
- Report up-to-date status and requirements of health care facilities including reassessments following aftershocks.
- Maintain coordination and intelligence gathering of medical capacity and conduct surveillance in impacted areas.
- Identify and prioritize potable water/wastewater/industrial water repair needs for health facilities.
- Coordinate Disaster Medical Assistance Team (DMAT) operations and resources.
- Coordinate Federal Disaster Mortuary Operational Response Teams (DMORT).
- Coordinate National Disaster Medical System (NDMS) patient movement to support evacuation.
- Identify and prioritize medical equipment, pharmaceutical, PPE and supply needs.
- Coordinate and manage patient movement.
- Plan and prioritize for pharmaceutical and non-pharmaceutical distribution needs.
- Report any necessary repairs for health, medical and first responder facilities.
- Coordinate Federal Medical Facilities operations and resources.

- Facilitate EMAC public health and medical health resources.
- Identify and prioritize medical equipment, pharmaceutical, PPE and supply needs.
- Coordinate mental health care needs.
- Administer, prioritize and deploy SNS.
- Ensure safety and security of drugs and equipment.
- Coordinate durable specialized equipment and prescription medications to designated mass care operational facilities.
- Provide supplies and services for environmental health and safety of responders not provided through the logistics capabilities of their own agencies.
- Counsel family members of the dead, injured, and others affected by the incident.
- Establish blood bank for emergency blood donations.

ESF 9: Search and Rescue



- Update SAR response needs, particularly following aftershocks, and determine priority solutions.
- Establish search area grids and monitor the status of the degree of clearance.
- Report % of SAR activities and operational gaps with life safety focus.

ESF 10: Hazardous Materials



- Produce and report hazardous material releases from initial assessments to ESF 8.
- Prepare and report initial hazardous material contamination assessments.
- Coordinate and support needs of impacted areas to ensure survivor safety from hazardous materials and releases.
- Identify support needs from local, tribal, state agencies and private sector through appropriate channels.
- Identify and prioritize hazards and forecast shortfalls in order to develop contingency plans.
- Identify and contact responsible parties of spills and/or releases to activate their risk management plans and to notify them of their fiscal and environmental responsibilities.
- Direct resources to identify and assess environmental health and safety risks.
- Track and analyze hazardous material response needs and determine solutions.
- Track hazardous material activities and mission status, and report information to ESF 5.
- Coordinate just-in-time health and safety training for responders at Joint Reception, Staging, Onward Movement, and Integration (JRSOI) sites to prevent hazards exposure.
- Provide supplies and services for environmental health and safety of responders not provided through agencies (oil booms, decontamination and monitoring equipment).
- Develop plume modeling of downwind toxic inhalation threats and conduct community air monitoring as needed.

ESF 11: Food and Water



- Assure safety and security of food supply.
- Coordinate with ESF 8 for the provision of food and potable water to medical facilities.
- Coordinate for ordering and delivery of food and potable water to impacted areas.
- Assist ESF 6 with feeding (diversion of food programs).
- Coordinate, receive, store, stage and distribute food and potable water.
- Coordinate with ESF 3 to identify alternate sources of potable water supplies.
- Coordinate food and potable water needs for human and animal responders.

ESF 12: Energy



- Support debris removal activities to support lifesaving operation.
- Determine fuel availability and backup capabilities at system levels.
- Coordinate the allocation of fuel to support mass care operation.
- Coordinate transportation and distribution of propane and Liquefied Natural Gas (LNG).
- Identify equipment and personnel needs and support capabilities.
- Monitor and continue to assess energy supplies and infrastructure following aftershocks.
- Track power outages and restoration activities and report information to ESF 5.
- Participate in the Temporary Power Task Force to prioritize generator installations for facilities that need emergency power.

ESF 13: Military Support



- Support public outreach efforts regarding hazardous conditions or materials.
- Provide air traffic control assistance as needed.
- Provide coastal runway/landing zone usability assessment.
- Provide transportation support for survivors to mass care operations.
- Deploy sheltering units as requested.
- Support health and medical needs at mass care operations.
- Deploy potable water storage, distribution and purification systems.
- Establish Joint Reception, Staging, Onward Movement, and Integration (JRSOI) sites.
- Assist in procuring/contracting equipment, supplies and services to meet incident needs.
- Identify future missions and forecast shortfalls in order to develop contingency plans.
- Coordinate provision of engineers and specialists from DOD (USACE, Naval Facilities, Air Force Civil Engineers Support Agency).

- Support ESF 10 to monitor and identify hazardous materials during emergency repair missions.
- Coordinate with incoming military support agencies.
- Assist in the transportation and distribution of food for people and animals, potable water and commodities to PODs.
- Deploy fatality search and recovery teams.
- Support emergency repair missions (portable generators and fuel, transportation crews and equipment, bed down repair teams).
- Continue to support civilian authorities' requirements with Aviation and Airlift.
- Continue to support civilian authorities' requirements with Command and Control.
- Continue to support civilian authorities' requirements with Logistics.
- Continue to support civilian authorities' requirements with Medical.
- Continue to support civilian authorities' requirements with Maintenance.
- Continue to support civilian authorities with Security.
- Continue to support civilian authorities' with Transportation (surface).
- Continue to support civilian authorities' requirements with Communications.
- Assist movement of equipment and supplies to affected areas via air, water and land.
- Coordinate with Defense Coordination Element (DCE) for military support, including Civil Air Patrol.

ESF 14: Public Information



- Refine and update public messaging on life-sustaining information including mass care/shelter locations, reunification centers, and health and safety messages.
- Monitor and correct misinformation with timely release of factual information.
- Distribute information on survivors and reunification programs.
- Disseminate information on POD locations, availability to the public, and instructions.
- Maintain VOST operations to monitor and leverage relevant social media platforms to identify trends and inform decision making.
- Coordinate with public and private energy suppliers to distribute status updates on extent and duration of utility outages.
- Via VOST, monitor information sources from outside the impacted areas.
- Coordinate with all ESFs to collect, develop, distribute, and maintain pre-scripted messaging.
- Maintain JIS and JIC resources to interact with local, tribal, state, federal, NGO and private sector partners for information sharing.
- Prepare public service messaging in coordination with media and other organizations for public release.

- Establish a Request for Information (RFI) tracking system.
- Disseminate information on POD locations, availability to the public, and instructions.
- Support ESF 6 and 15 to disseminate volunteer and donation information to the public.
- Initiate targeted public messaging for fatality management that addresses cultural sensitivity, public engagement, and tribal and native people's beliefs.

ESF 15: Volunteers and Donations



- Identify volunteer, donated and private sector resources available to meet local, tribal and state needs.
- Coordinate with humanitarian groups on monetary donation instructions.
- Coordinate resources to support relief efforts provided by NGOs and the private sector performing logistics related functions.
- Maintain database of volunteer organization capabilities.
- Identify the resource needs of volunteers and their organizations.
- Coordinate and manage donations of supplies and resources or services.
- Receive and distribute mass care donations.
- Identify the care and feeding needs of volunteers.

ESF 16: Law Enforcement



- Provide threat assessment and security intelligence for staging areas and PODs.
- Support operational and tactical security planning and operations for staging areas, PODs and SNS locations.
- Activate and coordinate use of correctional facilities, equipment and inmate labor.
- Determine the availability of security and protection resources of all ESF 16 partners (private and public sector) for potential deployment to the impacted area.

ESF 17: Agriculture and Animal Protection



- Assist with prevention, identification and control of high consequence and zoonotic diseases.
- Identify and assess needs and capabilities of known animal and veterinary facilities.
- Coordinate veterinary medical care and animal sheltering.
- Coordinate with ESF 6 and 14 to disseminate animal shelter locations.
- Determine animal sheltering, feeding and medical logistics and facility needs.
- Identify overflow animal care facilities in counties and states not impacted.
- Coordinate procurement and delivery of animal sheltering, feeding and medical needs.
- Coordinate food, water and movement of displaced livestock from impacted areas.
- Coordinate all documentation for related in kind donations, costs, actions, decisions and related communications.

- Coordinate veterinary medical care and resources for animal responders.
- Coordinate removal and disposal of animal carcasses.

ESF 18: Business and Industry



- Locate and coordinate available private sector space for logistic warehousing activities.
- Assist ESF 7 in purchasing and coordinating private sector resources.
- Locate equipment available for loan and coordinate with ESF 7 to track usage and operational condition.
- Assist ESF 15 with identification of volunteers and donated resources available to meet local, tribal and state needs.
- Coordinate with ESF 12 on fuel supply status for private sector needs.
- Initiate protocols for sharing information about capacity and waivers.
- Coordinate with private sector (retail, manufacturing) for prioritized emergency repairs.
- Contact vendors and suppliers to determine available private sector resources.
- Contact and alert private sector partners whose personnel or equipment are needed.
- Coordinate with local jurisdictions on private sector resource needs.
- Document incident related private industry donations, loans, personnel time and related communications.

(This page intentionally left blank)

PLAY 6:
Event + 4 Days

PLAY 6: Event +4 Days



Objectives:

- **Assess damages to impacted areas across all sectors**
- **Transport displaced individuals to shelters**
- **Provide transportation, equipment, and services to support access and functional needs populations**
- **Clear debris and restore access to lifeline roadways and critical infrastructure**
- **Reassess damages following aftershocks**
- **Identify critical infrastructure outages and impacts**
- **Prioritize emergency response and infrastructure repairs based on interdependencies and consequences**
- **Forecast and develop plans for evolving threats and consequences**
- **Identify future needs and forecast shortfalls in order to develop contingency plans**
- **Plan for fatality management operations**
- **Provide subject matter expertise and participate in planning and response activities**

ESF 1: Transportation



- Coordinate and provide traffic control, evacuation assistance and aerial support of operations.
- Coordinate aerial reconnaissance for observation of damaged areas, including viewing the condition of pre-sited open areas, pre-identified facilities, and any other standing facilities that could serve as shelters.
- Coordinate the transportation of mass care operations and personnel to impacted areas.
- Develop transportation resource list for availability and needs (additional transportation support, repair equipment and personnel).
- Obtain waivers for driver restrictions, weight limits and oversize vehicles on public roadways to support emergency transportation efforts.
- Produce and distribute situation status reports.
- Prioritize restoration of lifeline transportation systems based on operational needs, damage and safety assessments.
- (Federal Department of Transportation) Coordinate the stabilization/reestablishment of transportation systems and infrastructure.

- (US Coast Guard) Coordinate and/or provide resources, assessments, expertise, technical assistance, monitoring, and other appropriate support as needed.
- Transport communication trailers to impacted areas.
- Provide barriers and signage to aid missions.
- Facilitate the transportation of support equipment to impacted areas.
- Facilitate the deployment of damage assessment teams to impacted areas.
- Support response priorities in the Columbia River and coastal ports, including vessel removal, marine debris removal, emergency dredging, and hydrographic surveys.
- Assist with evacuations and medical transport for vulnerable populations to shelters.
- Establish transportation priorities for open routes.
- Engage available surge engineer personnel (academics, professionals, retired federal or military, etc.) to support ongoing transportation assessments (roads, bridges, airports, ports, ferry systems, rail systems) due to the original impact and those caused by aftershocks.
- Establish a sustainable multimodal transportation network.
- Plan and execute a transportation network for moving survivors and animals.
- Assess and prioritize transportation infrastructure restoration.
- Coordinate with other ESFs on repair and restoration of co-located infrastructure.
- Identify and locate available resources to meet prioritized tasks.
- Track and analyze transportation issues and emergency repairs.
- Identify additional needs, resource shortfalls and contingency plans following aftershocks.

ESF 2: Communications



- Reassess communication capabilities following aftershocks.
- Establish Communication Plan to coordinate with private sector entities.
- Track and analyze communication issues and determine priority solutions.
- Track communication outages and restoration and report information to ESF 5.
- Provide Geographic Information System (GIS) support.
- Prioritize backup mobile communication needs and convey to FEMA for deployable assistance in impacted communities.
- Implement call down list procedures to initiate communications with local, tribal and federal entities to identify capabilities and resource shortfalls.
- Identify and re-evaluate communication needs, provide alternate solutions to address shortfalls, and develop contingency plans.
- Coordinate planning, implementation and operation of communication support.
- Establish communication among all levels of government and between response partners, to support situational awareness through COP.
- Establish and maintain communication services for responders.



ESF 3: Public Works

- Coordinate debris removal in support of damage assessment missions.
- Provide operational assessment of critical pipeline systems.
- Coordinate teams to assess public works infrastructure vulnerabilities, and to support rapid needs assessment.
- Coordinate debris removal in support of mass care operations.
- Prioritize and initiate emergency utility repairs.
- Identify, mobilize and coordinate transport of heavy equipment, repair parts and personnel.
- Coordinate building safety inspections.
- Reassess public works infrastructure and systems following aftershocks.
- Establish Critical Infrastructure Task Force to prioritize, repair and restore critical systems to support emergency response operations and services to survivors.
- Prioritize restoration of systems and infrastructure.
- Continue mission planning and execution across the impacted area of operation.
- Identify future needs and forecast shortfalls in order to develop contingency plans.



ESF 4: Firefighting

- Coordinate aircraft to assist with firefighting.
- Serve as liaison for support between local, tribal, state and federal firefighting personnel.
- (US Dept. of Agriculture/US Forest Service) Coordinate federal firefighting activities.
- Identify additional fire hazards and mitigation and contingency plans.
- Serve as liaison for support between local, tribal, state and federal firefighting personnel.
- Coordinate with ESFs 3 and 12 on powerline and pipeline damages and other potential fire issues.
- Utilize Fire Mobilization Plan to strengthen incident management, communications, public information, logistical support, and financial documentation services.
- Provide guidance to help ensure fire and safety for mass care operations.



ESF 5: Information and Planning

- Issue status and situational updates on infrastructure repairs.
- Respond to information needs of Governor, TAG and governmental leadership.
- Establish and maintain the ECC reporting and information rhythm.
- Coordinate with key personnel in the field, maintain situational awareness and COP.
- Utilize GIS and other technological platforms to provide visual situation awareness to aid decision-making.

- Utilize modeling, initial aerial assessments, reports, and liaison information to build-out the COP.
- Provide liaison to FEMA Region 10 Operations Center.
- Maintain coordination with USGS, National Oceanic and Atmospheric Administration (NOAA) and Tsunami Warning Center, to support notification of geologic hazards due to aftershocks.
- Collect and refine situation reports from all ESFs, and narrow analysis efforts.
- Review damage assessments, aftershock impacts and develop contingency plans

ESF 6: Mass Care



- Gather information on shelter locations and management needs for vulnerable populations.
- Establish situational awareness on emerging non-affiliated shelter operations.
- Coordinate with government representatives, American Red Cross (ARC), non-government organizations (NGOs), and community groups (churches, etc.) to manage shelter operations.
- Provide information to ESF 5 on shelter locations via situational status reports to be distributed to all ESFs.
- Assess and report statewide mass care status and unmet needs.
- Identify temporary housing availability.
- Coordinate with agencies and organizations to provide shelters, personnel and food.
- Coordinate and prioritize resource requests for the provision of temporary or short-term emergency housing for impacted residents.
- Report requirements for type, quantity, and delivery locations of emergency water and food for shelters.
- Develop sheltering plan and atypical solutions for coastal and other impacted communities.
- Coordinate with ESF 14 to broadcast shelter locations, instructions, and status of mass care operations.
- Continue to monitor and support the provision of shelter and feeding operations for impacted communities.
- Report status and requirements for physically accessible sheltering, feeding, and related activities to support survivors.
- Track and analyze sheltering status.
- Identify future needs and forecast shortfalls in order to develop contingency plans.
- Coordinate subject matter expertise in planning and response related to access and functional needs populations.
- Coordinate with ESF 8 to identify those who may need counseling related to stress and anxiety due to death, injuries, and other losses.



ESF 7: Resource Support

- Procure and coordinate PPE supplies for survivors and responders.
- Identify (from pre-developed lists) locations of surviving resources to assist response efforts.
- Identify and prioritize resource requests from local, tribal, state and private partners.
- Maintain an available resource list of state agency resources and capabilities.
- Maintain emergency resource vendor contacts to support response efforts.
- Locate and purchase resources.
- Establish and operate logistics support facilities to include the management of services related to lodging and feeding of incident response, support, and volunteer personnel.
- Identify and prioritize available lodging for responders.
- Track resources requests including the movement of assets and personnel.
- Coordinate with ESF 12 to procure and track resources to support emergency repairs (e.g. fuel, generators).
- Coordinate logistic support teams and resources.
- Coordinate with FEMA to maintain status of the response and identify shortfalls.
- (General Service Administration) Provide equipment, supplies, and facilities as required.
- Coordinate with FEMA logistic support teams and resources in support of recovery efforts.
- Locate, purchase and coordinate delivery of resources to support recovery efforts.
- Reassess, track and prioritize needs following aftershocks.
- Identify future needs and forecast shortfalls in order to develop contingency plans.
- Coordinate with ESF 5 to identify needs and procure resources.

ESF 8: Health and Medical



- Coordinate medical logistic support (supplies, personnel and teams).
- Coordinate use of non-traditional facilities such as hotels, Ambulatory Surgery Centers, or containerized medical units to treat disaster victims in the impacted areas.
- Coordinate use of non-traditional facilities to treat disaster victims in the impacted areas.
- Identify critical medical facility energy shortfalls and report to ESF 12.
- Identify, coordinate and support medical needs and public health needs of mass care operations and county/tribal public health departments, state agencies, nonprofits and EMS services.
- Coordinate mass fatality activities.
- Coordinate EMS assets and facilitate redeployment of assets.
- Coordinate durable specialized equipment and prescription medications to designated mass care operational facilities.

- Identify future needs and forecast shortfalls in order to develop contingency plans.
- Update PPE requirements for survivors and responders.
- Continue to coordinate with federal fatality management operations and resources.
- Report up-to-date status and requirements of health care facilities including reassessments following aftershocks.
- Inform medical practitioners on crisis standard of care levels and health care practices.
- Coordinate and manage patient movement.
- Plan and prioritize for pharmaceutical and non-pharmaceutical distribution needs
- Maintain coordination and intelligence gathering of medical capacity and conduct surveillance in impacted areas.
- Identify future needs and forecast shortfalls in order to develop contingency plans.
- Establish locations for fatalities to be identified and reunified with families.
- Conduct appropriate/specialized training for public, responders and volunteers.

ESF 9: Search and Rescue



- Identify future missions and forecast shortfalls in order to develop future contingency plans.
- Continue SAR operations for isolated pockets of survivors thru County SAR.
- Develop and plan for land SAR operations as needed.
- Track SAR activities and mission status and report information to ESF 5.

ESF 10: Hazardous Materials



- Coordinate with special teams: OSFM State Hazardous Material Teams, ODOT incident response teams, OHA Radiation Response Team, Civil Support Team (CST), Department of Environmental Quality (DEQ), local emergency responders and others as needed.
- Determine structural safety of oil and hazardous material storage facilities.
- Identify, order, stage and provide PPE supplies to mitigate conditions for survivors and responders.
- Develop a plan to clean up high priority oil and hazardous material releases.
- Provide hazardous materials guidance and clean up in support of emergency repair missions.
- Provide status of incoming hazardous material response capabilities.
- Coordinate technical assistance and personnel to support hazardous material response.
- Identify and prioritize hazards and forecast shortfalls to develop contingency plans.

- Provide technical assistance to environmental health and safety response.
- Direct resources to respond to environmental health and safety risks.
- Track and analyze hazardous material response needs and determine solutions.
- Track hazardous material activities and mission status, and report information to ESF 5.
- Update and maintain assessment within the impacted area to identify and develop information about environment health and safety risks in the incident area.

ESF 11: Food and Water



- Coordinate with county officials, ESF 6 and ESF 7 to ensure ample and timely deliveries of food, potable water and ice supplies.
- Coordinate with ESF 6 for the provision of culturally and medically appropriate food and water for mass care operations.
- Ensure the safety and wholesomeness of food and potable water for mass care operations.
- Assure safety and security of food supply.
- Coordinate, receive, store, stage, and distribute food and water.
- Coordinate food and potable water needs for human and animal responders.
- Coordinate with ESF 3 to identify alternate sources of potable water supplies.
- Advise ESF 1 on priority roadway clearing to aid in food and water distribution.
- Advise ESF 3 on priority of water repairs.
- Assist County Health Departments with water testing.
- Track and prioritize local food and potable water needs of impacted areas.
- Assist communities with identifying alternate potable water supply sources.
- Identify needs, resource shortfalls and develop contingency plans following aftershocks.
- Identify food and potable water needs for human and animal responders.

ESF 12: Energy



- Monitor and continue to assess energy supplies and infrastructure following aftershocks.
- Provide analysis of the extent and duration of energy suppliers' outages and prioritize essential service needs.
- Track power outages and restoration activities and report information to ESF 5.
- Prioritize systems and infrastructure and identify requirements for repair and restoration.
- Coordinate with energy suppliers to distribute information updates.
- Track and analyze power and fuel issues and determine priority solutions.
- Identify needs, resource shortfalls and develop contingency plans.

- Coordinate with energy suppliers and resources outside the impacted areas to support both tactical and permanent repairs.
- Analyze the extent and duration of fuel shortage and prioritize needs.

ESF 13: Military Support



- Continue to support civilian authorities' requirements with Engineering.
- Continue to support civilian authorities' requirements with Chemical, Biological, Radiological, Nuclear, and high yield Explosives (CBRNE).
- Coordinate with the Department of Defense to assess the availability of laboratory and diagnostic support, subject-matter expertise, and technical assistance.
- Coordinate with US Army Corps of Engineers to provide potable water, construction materials and engineering services.
- Coordinate with US Army Corps of Engineers to provide mobile field elements and logistics support teams.
- Coordinate with US Army Corps of Engineers to provide commodities distribution assistance and expertise for PODs, training and state-level commodities project management support.
- Coordinate with US Army Corps of Engineers to support the hauling, installing, operations and maintenance of DHS/FEMA generators for critical public facilities.
- Coordinate with Department of Defense to provide laboratory support to assist and augment the capabilities of Animal and Plant Health Inspection Services (APHIS).
- Monitor and reassess needs following aftershocks.
- Identify future missions and forecast shortfalls in order to develop contingency plans.
- Request Title 32 and Title 10 resources.
- Deploy fatality search and recovery teams.

ESF 14: Public Information



- Confirm surge requirements for all public information and warning functions.
- Collect, analyze and distribute public information messages regarding repairs.
- Coordinate public information with local, tribal, state and federal partners on assistance programs.
- Distribute information on victims and reunification programs.
- Determine updated messaging strategy to media.
- Coordinate with news media inside and outside the impacted areas (official web sites, social networking platforms) to widely disseminate incident updates and information.
- Inform elected and appointed officials and public on response efforts.
- Develop and disseminate messages to public following aftershocks.



ESF 15: Volunteers and Donations

- Establish and maintain staffing for a hotline for donations.
- Track volunteer and service-based organization activities and report information to ESF 5.
- Coordinate volunteer resources and personnel to assist local communities.
- Coordinate with national and international humanitarian groups to facilitate unmet needs for donated goods, volunteers and monetary contributions.
- Coordinate with American Red Cross to support the whole community logistics supply chain through synchronization of pre-planning activities and coordination during responses to major disasters.
- Coordinate with National VOAD to facilitate information sharing by member organizations.
- Coordinate with Corporation for National and Community Service to provide support to Oregon, including trained national service participants to support state volunteer and donations management operations.
- Initiate plan that distinguishes tasking for affiliated versus unaffiliated volunteers.
- Implement plan for volunteer credentialing and background screening as needed for sensitive tasks.
- Plan and prioritize donated resources available to meet local, tribal and state needs.

ESF 16: Law Enforcement



- Develop plan for the re-establishment of public safety systems.
- Identify future missions and forecast shortfalls in order to develop contingency plans.
- Plan and prioritize use of limited law enforcement assets.
- Identify force protection/security for response missions and deploy required resources.
- Communicate and coordinate with federal agencies, state agencies, counties, and tribes.

ESF 17: Agriculture and Animal Protection



- Coordinate food, water and movement of displaced livestock from impacted areas.
- Coordinate all documentation for related in kind donations, costs, actions, decisions and related communications.
- Coordinate veterinary medical care and resources for animal responders.
- Track and prioritize current animal response capabilities and needs, and project future needs.
- Identify resource shortfalls and develop contingency plans, to include animal specific contracts.

- Coordinate out of state, NGO and federal resources to respond to animal health emergencies.
- Coordinate out of state, NGO and federal resources to respond to agricultural emergencies.
- Track and prioritize current animal response capabilities and needs, and project future needs.
- Identify resource shortfalls and develop contingency plans, to include animal specific contracts.
- Identify overflow animal care facilities in counties and states not impacted.

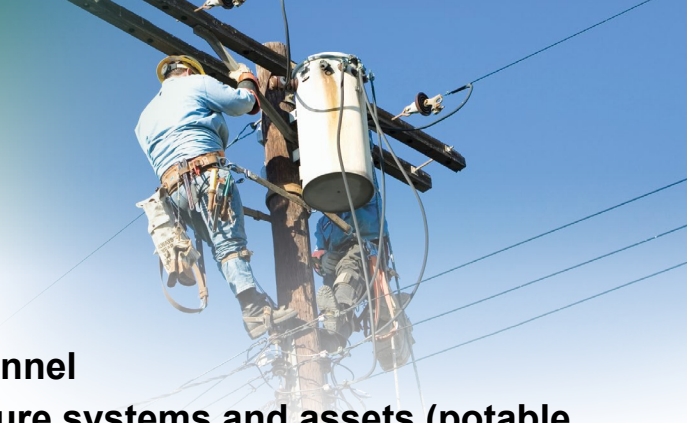
ESF 18: Business and Industry



- Engage grocery chains and other retailers to expedite reopening/re-supply of stores in impacted areas to support displaced populations.
- Document incident related private industry donations, loans, personnel time and related communications.
- Identify private sector needs and forecast shortfalls to develop contingency plans.
- Coordinate response with private sector businesses, industry associations, economic development associations and other entities.
- Gather and maintain situational awareness of critical local retailers open for business in order to support community re-entry.
- Coordinate with ESF 7 to relay repair and restoration requests from private partners.
- Support and coordinate with local, tribal and private sector repair crews.
- Coordinate with private sector/vendors to support permanent restoration of state and local emergency communications capabilities.
- Assess and report status of retail and business operations within Oregon and communicate recovery needs.
- Coordinate with ESF 15 to dispatch available, trained volunteers to disaster area to assist business owners as needed.
- Track and analyze the operating status of local and regional businesses.
- Coordinate with ESF 12 on fuel supply status for private sector needs.
- Track and analyze supply chain status (pharmaceuticals, food and water, and chemicals).
- Initiate protocols for sharing information about capacity and waivers.
- Gather and maintain situational awareness of critical local retailers open for business in order to support community re-entry.
- Coordinate with partners and ESF 3 to establish structural and operational re-entry standards for private sector facilities.

PLAY 7: **Event + 7 Days**

PLAY 7: Event +7 Days



Objectives:

- **Mobilize heavy equipment and personnel**
- **Prioritize repair of critical infrastructure systems and assets (potable water, wastewater, energy, and telecommunications)**

ESF 1: Transportation



- Prioritize restoration of lifeline transportation systems based on operational needs, damage and safety assessments.
- Expand debris removal operations beyond lifeline routes to include other prioritized routes.
- Establish transportation priorities for open routes.
- Coordinate the establishment of coastal ocean transportation system while roads, bridges and air travel are out of service (DoD, United States Coast Guard (USCG) and Maritime Administration).
- Identify and mobilize heavy equipment and personnel needed for repairs.
- Institute temporary vehicle restrictions.
- Initiate the opening of additional roadways to support evacuation.
- Initiate the reestablishment of airports and enact flight restrictions (coastal priorities).
- Initiate repair of ports and docks.
- Coordinate with the Federal Department of Transportation for the deployment of National Defense Reserve Fleet Ships (48) via the Maritime Administration (MARAD) and Ready Reserve Force (RRF).
- Coordinate with FEMA for the provision of transportation assets and service contracts in support of mass evacuations.
- Coordinate with the US Army Corps of Engineers for the provision of technical assistance, project management, engineering expertise, and construction management resources and support.
- Coordinate with the US Army Corps of Engineers for the assessment, maintenance, and repair of shipping channels/river-line navigation infrastructure.
- Coordinate with the National Oceanic and Atmospheric Administration for the provision of scientific support assessing impact to the coastal zone using population data, storm track, known areas of coastal damage, and general information on currents and winds to predict areas of high debris density and abundance.
- Coordinate with the US Coast Guard for marking and coordination with DOD/USACE for removal of obstructions declared to be hazards to navigation.

- Coordinate with the US Coast Guard for provision of assistance in vessel salvage and removal of vessel debris.

ESF 2: Communications



- Assess, prioritize and coordinate repair of damaged emergency communications.
- Restore communication systems based on operational priorities.
- Reestablish computer and data systems.
- Employ restoration communication teams and equipment to significantly impacted areas and associated transportation corridors.
- Coordinate with private sector owners/operators to update support requirements for reestablishment of public messaging capabilities.
- Identify and implement restoration solutions for communications systems.

ESF 3: Public Works



- Prioritize and initiate emergency utility repairs.
- Identify, mobilize and coordinate transport of heavy equipment, repair parts and personnel.
- Coordinate building safety inspections.
- Coordinate approval and construction of temporary systems (above ground water/wastewater lines, etc.).
- Coordinate emergency repair for temporary critical public facilities, to include health care facilities and schools.
- Coordinate debris removal, emergency demolition and temporary repair of structures.

ESF 4: Firefighting



- Provide equipment support to aid in restoration activities.
- Coordinate with ESF 3 to prioritize repairs of emergency firefighting systems such as fire hydrants and water supply to fire suppression systems at shelters and mass care facilities.
- Coordinate with the US Dept. of Agriculture/US Forest Service for the provision of qualified ESF 4 personnel to serve at the national and regional/area levels.
- Identify and report Personal Protective Equipment (PPE) requirements for survivors and responders to ESF 7.

ESF 5: Information and Planning



- Issue status and situational updates on infrastructure repairs.
- Establish ECC liaisons in each of the impacted counties and Tribes.



ESF 6: Mass Care

- Assist shelters and mass feeding locations in being accessible, safe and having access to emergency power, potable water and wastewater systems.
- Conduct assessment of access and functional needs populations that may require special assistance receiving information or responding to public safety instructions.
- Establish mechanism for population of unaccompanied children for protection services, including support for welfare and developmentally disabled assistance, and child health.
- Identify, prioritize and coordinate resource requests to support/sustain local and tribal shelter operations.
- Identify and request specific resources necessary to provide mental health services and the access and functional needs of individuals receiving mass care services.
- Report status and requirements for physically accessible sheltering, feeding, and related activities to support survivors.
- Track and analyze sheltering status.
- Coordinate subject matter expertise in planning and response related access and functional needs populations.
- Coordinate with federal liaisons in designated areas to facilitate requests and needs for mass care assistance.
- Coordinate the provision of temporary and intermediate housing.



ESF 7: Resource Support

- Coordinate with ESF 12 to procure and track resources to support emergency repairs (fuel, generators).
- Secure funding for purchase or lease temporary facilities to conduct emergency repairs.
- Support the deployment of teams to conduct assessments of critical infrastructure.
- Coordinate procurement of supplies and resources to support mass care operations.
- Coordinate location of distribution facilities and identify alternate sites.
- Coordinate delivery of supplies and establish supply chains.
- Coordinate, establish, and manage state staging areas.
- Locate and coordinate space for incident management and warehousing operations.
- Procure and coordinate delivery of sanitation resources (e.g. dumpsters, hand wash stations, portable toilets) to impacted areas.
- Procure through lease or purchase additional boats and vessels to meet tasks of ferrying population or transferring supplies.
- Coordinate with FEMA for the designation on which ISBs are available for sustained operations.
- Coordinate with FEMA for the assessment of potential JFO sites and support initial field employment into impacted areas.

ESF 8: Health and Medical



- Assess and report the medical infrastructure needs of hospitals, trauma centers and health clinics.
- Report any necessary repairs for health, medical and first responder facilities.
- Identify and prioritize potable water, wastewater and industrial water repair needs for health facilities.
- Where possible, arrange for evacuation of access and functional needs populations out of general population shelters to ensure effective care.
- Track EMS assets and facilitate redeployment of assets on a mission essential basis.
- Coordinate mental health care needs.
- Inform medical practitioners on crisis standard of care levels and health care practices.
- Establish locations for fatalities to be identified and reunified with families.
- Coordinate with FEMA for the activation of Ambulance Contract IMT for patient movement.
- Support ESF 6 in evaluating individuals with chronic medical, mental health or behavioral assistance needs that normally live independently.

ESF 9: Search and Rescue



- Continue critical SAR air operations as warranted by affected county.
- Continue coordination of CISAR missions by air, ground where feasible.

ESF 10: Hazardous Materials



- Provide hazardous materials guidance and clean up in support of emergency repair.
- Coordinate and direct clean-up of high priority release sites.
- Coordinate just-in-time health and safety training for responders at RSOI sites to prevent hazards exposure.
- Coordinate with ESF 1, the EPA, the FRA, and PHMSA for the deployment of hazardous material inspectors and response teams to priority releases associated with railroads and pipelines.

ESF 11: Food and Water



- Advise ESF 1 on priority roadway clearing to aid in food and water distribution.
- Advise ESF 3 on priority of potable water repairs.

ESF 12: Energy



- Coordinate the assessment, repair and reestablishment of energy systems needed to support critical facilities and essential services.
- Engage in energy infrastructure and system restoration.

- Participate in the Temporary Power Task Force to prioritize generator installations for facilities that need emergency power.
- Monitor and support response to radioactive material releases (Hanford, Columbia Generating Station/Trojan Fuel Storage).
- Coordinate the identification and mobilization of heavy equipment and personnel needed for energy supplier repairs.
- Establish new temporary sites for fuel distribution to support emergency repairs to critical infrastructure.

ESF 13: Military Support



- Provide heavy road clearance and construction equipment and personnel to support and engage in repair missions.
- Coordinate provision of engineers and specialists from DoD (USACE, Naval Facilities, Air Force Civil Engineers Support Agency).
- Support emergency repair missions (portable generators and fuel, transportation crews and equipment, bed down repair teams).
- Support ESF 10 to monitor and identify hazardous materials during emergency repairs.

ESF 14: Public Information



- Update and distribute public service messaging in coordination with media and other organizations.

ESF 15: Volunteers and Donations



- Coordinate volunteer resources and personnel to assist local communities with repairs.

ESF 16: Law Enforcement



- Coordinate access and perimeter site security.
- Coordinate traffic and crowd control as needed.
- Coordinate with US DOJ for federal law enforcement support of state and local agencies.
- Coordinate with DHS Protective Security Advisor to identify vulnerability and risks in infrastructure assets and systems.
- Coordinate with the US Department of Justice and US DOJ for the provision of federal law enforcement support of state and local agencies.
- Coordinate with the US Department of Homeland Security for the provision of Protective Security Advisor (PSA) support to Oregon ECC.
- Coordinate with the US Department of Homeland Security for the communication of vulnerabilities and risks to infrastructure systems to ESF 16 as necessary.

ESF 17: Agriculture and Animal Protection



- Assist to identify and prioritize access and repairs to animal facilities.
- Assist to identify and prioritize access and repairs to agricultural facilities.

ESF 18: Business and Industry



- Coordinate with private sector (retail, manufacturing) for prioritized emergency repairs.
- Coordinate with ESF 7 to relay repair and restoration requests from private partners.
- Support and coordinate with local, tribal and private sector repair crews.

PLAY 8: **Event + 10 Days**

PLAY 8: Event +10 Days



Objectives:

- **Receive and coordinate logistics support for out-of-state resources**
- **Expedite and facilitate utility repair crews from other regions**
- **Receive and deploy volunteers and donated goods and services**
- **Track federal and international activation levels and deployment of federal and international assets and humanitarian aid to Oregon**
- **Initiate operational transition from playbook to situationally informed operations**

ESF 1: Transportation



- Coordinate aerial assessment of shelters and supply staging areas.
- Establish a sustainable multimodal transportation network.
- Plan and execute a transportation network for moving survivors and animals.
- Assess losses of equipment and personnel.

ESF 2: Communications



- Reassess communications capabilities following aftershocks.
- Survey and track equipment damages related to incident.

ESF 3: Public Works



- Maintain contact and coordination with federal ESF 3 partners.
- Coordinate with the US Army Corps of Engineers (USACE) in the development of a local, tribal, state, and federal strategy for debris removal to include the development of priorities and allocation of debris removal resources.
- Coordinate with US Army Corps of Engineers (USACE) for the deployment of teams and participate in debris management.
- Coordinate with US Army Corps of Engineers (USACE) for the provision of expertise and resources to assist in the removal and disposal of contaminated and non-contaminated debris, to include animal carcasses and debris affecting Natural and Cultural Resources and Historic Properties (NCH) resources.
- Coordinate with US Army Corps of Engineers (USACE) for the identification of flood control actions for failed levees, dams, and water/wastewater facilities.
- Coordinate with the US Army Corps of Engineers (USACE) for the performance of assessments of all projects, and with appropriate stakeholders to prioritize, plan, and execute repairs to damaged projects and infrastructure.

- Coordinate with US Army Corps of Engineers (USACE) for the management of federal dams and ensure their safety.
- Coordinate with the US Army Corps of Engineers (USACE) for the provision of support to ESF 9 Search and Rescue (SAR) via temporary emergency power, commodities, potable water, temporary housing, rapid temporary repair/roofing, critical public facilities, infrastructure assessment, and structural engineering support.
- Coordinate with Mine Safety and Health Administration for the provision of engineering services to determine the cause or location of an event.
- Coordinate with Mine Safety and Health Administration for the performance of structural integrity analysis, and recommend hazard mitigation steps.
- Coordinate with the US Dept. of Interior/Bureau of Reclamation for the provision of engineering support to assist in evaluating damage to water control systems, such as dams, levees, and water delivery facilities and structures.
- Coordinate with the US Dept. of Interior/Bureau of Reclamation for the provision of personnel to assist in damage assessment, structural inspections, debris clearance monitoring, and restoration of facilities in general.

ESF 4: Firefighting



- Provide ESF 4 resources as needed.
- Ensure adequate training for assigned responders employed by the state.
- Coordinate federal liaisons in designated areas to coordinate requests for firefighting assistance.
- Coordinate with ESF 10 for outside technical assistance and personnel to support hazardous material response.

ESF 5: Information and Planning



- Plan for transitional support to recovery operations.
- Facilitate receipt and coordination of federal resources and teams.

ESF 6: Mass Care



- Coordinate with federal liaisons in designated areas to facilitate requests and needs for mass care assistance.
- Identify specific risks or issues for pregnant or nursing women, infants, and young children, and recommend appropriate solutions.
- Establish mechanism for elder care and other access and functional needs populations.
- Establish mechanism to assist with evacuees and reunification efforts.
- Identify the locations and needs and support survivors who are not in mass care operations (either sheltering at home, isolated, or in improvised or unofficial shelters).



ESF 7: Resource Support

- Coordinate logistic support teams and resources.
- Integrate incoming DoD Marine assets into logistic plan to support the coast and areas along the Columbia River.
- Coordinate with FEMA to maintain status of the response and identify shortfalls.
- Identify future needs and forecast shortfalls in order to develop contingency plans.
- Coordinate with the US Department of Labor for the provision of technical personnel to assist in the identification and recruitment of individuals with specialized occupations needed to support response operations.
- Coordinate with the US Department of Labor for the provision of students and instructors capable of providing support (ex. via regional-level Job Corps).
- Facilitate receipt and coordination of federal resources and teams.
- Facilitate EMAC public health and medical health resources.



ESF 8: Health and Medical

- Ensure safety and security of drugs and equipment.
- Provide supplies and services for environmental health and safety of responders not provided through the logistics capabilities of their own agencies.
- Conduct appropriate/specialized training for public, responders and volunteers.
- Assess with the need for rostering and registering and continue epidemiologic monitoring.
- Coordinate with local health providers for referral of medical and mental health issues to appropriate providers.



ESF 9: Search and Rescue

- Continue to redeploy USAR teams as isolated areas are cleared and identified.
- Identify active airfields for future SAR operations.



ESF 10: Hazardous Materials

- Provide status of incoming hazardous material response capabilities.
- Coordinate technical assistance and personnel to support hazardous material response.
- Identify and report communication requirements to support recovery operations.
- Coordinate with the US Environmental Protection Agency to lead response to spills and releases to inland areas and waters.
- Coordinate with US Coast Guard for the provision of teams and other supporting resources, as available, for disposal of hazardous material and oil from navigable and coastal waters.

ESF 11: Food and Water



- Identify and coordinate in long-term reestablishment of food/water infrastructure.
- Coordinate federal resources to respond to food and potable water safety needs.

ESF 12: Energy



- Support, coordinate and monitor the mobilization and demobilization of mutual aid responders.
- Report outcomes from federal damage assessments and the effect on regional and national energy systems.
- Work with energy suppliers to determine and provide ongoing updates to the status of their facilities, equipment, and systems; immediate needs; and capabilities to assess damage.
- Support debris removal activities for initial lifesaving operations. This includes electric utility operations support addressing downed lines, and fuel to support emergency equipment and vehicles. (Note: fuel for these initial missions will be from FEMA fuel purchasing contract via Defense Logistics Agency to Oregon Military Department.)
- Work with electric and natural gas utilities to determine ability for immediate service restoration.
- Work with electric and natural gas utilities to provide ongoing updates on estimated population impacted.

ESF 13: Military Support



- Coordinate with incoming military support agencies.
- Provide operational control of Title 10 and Title 32 resources (Dual Status Commander).
- Provide planning support, subsistence, administrative supply, petroleum product, engineering and construction supply, water and mobile units, medical material, telecommunications management, and transportation management support when approved by DoD.
- Assess the availability DoD food supplies and storage facilities capable of storing dry, chilled, and frozen food.
- Assess the availability of DoD transportation equipment, material handling equipment, and personnel for support (confined to the posts, camps, and stations within or adjacent to the affected area).
- Assess the availability of laboratory and diagnostic support, subject-matter expertise, and technical assistance.
- Provide laboratory support to assist and augment the capabilities of Animal and Plant Health Inspection Services (APHIS).
- Provide potable water, construction materials and engineering services.
- Provide a mobile field elements and logistics support teams.

- Provide commodities distribution assistance and expertise for PODs, training and state-level commodities project management support.
- Support the hauling, installing, operations and maintenance of DHS/FEMA generators for critical public facilities.

ESF 14: Public Information



- Coordinate public information with federal partners.

ESF 15: Volunteers and Donations



- Initiate assistance programs to provide ongoing recovery.
- Coordinate and integrate resources of volunteer organizations into recovery operations.

ESF 16: Law Enforcement



- Request and coordinate out-of-state law enforcement and corrections resources, including training and credentialing.
- Implement Fusion Center mutual aid agreements.
- Coordinate with DHS Protective Security Advisor to identify vulnerability and risks in infrastructure assets and systems.
- Coordinate with US DOJ for federal law enforcement support of state and local agencies.

ESF 17: Agriculture and Animal Protection



- Monitor, track and develop plan for outbreaks resulting in new deaths.
- Coordinate animal carcass removal and disposal operations.

ESF 18: Business and Industry



- Assess and report status of retail and business operations within Oregon and communicate needs to FEMA.
- Coordinate private and government sector recovery efforts.
- Coordinate economic recovery planning efforts with local, tribal, nonprofit, private sector and state and federal organizations.

(This page intentionally left blank)

PLAY 9: **Event + 2 Weeks**

PLAY 9: Event +2 Weeks



Objectives:

- **Identify regional and statewide priorities for restoration of community services, human services and critical infrastructure**

ESF 1: Transportation



- Assess equipment and personnel losses.
- Continue to monitor and restore transportation systems in support of recovery.
- Support reconstruction by opening transportation systems.
- Stabilize hazardous conditions to prevent additional injuries or damages to the transportation infrastructure.
- Assess and prioritize transportation infrastructure restoration.
- Initiate repair of ports and docks.
- Assess, identify, and clear established lifeline routes.

ESF 2: Communications



- Ensure communication infrastructure is capable of sustaining recovery operations.
- Continue to monitor and begin restoring prioritized communication systems.
- Coordinate and support commercial and residential communication systems.
- Identify surviving communications capabilities and availability and direct tactical repairs using both typical and atypical means of communication.
- Identify needs and support for Information Technology (IT) for mass care efforts (ex. establish data connections).
- Coordinate Information Technology (IT) assistance to state agencies that support mass care operations.
- Provide Geographic Information System (GIS) support.
- Execute communication plan to coordinate with private sector entities.

ESF 3: Public Works



- Continue collection of incident information and status of critical services.
- Assess and report critical damage, and develop timeline for restoration of public buildings, services and other critical assets.
- Inventory damaged assets and systems, and determine replacement needs.

- Assist local and tribal jurisdictions in the repair and reconstruction of water and wastewater systems.
- Continue to monitor and restore critical infrastructure and systems in support of recovery operations.
- Coordinate use of public buildings as needed for ongoing recovery needs.
- Assist utility providers with personnel, equipment and supplies as needed.
- Utilize private support agents, contractors and consultants as needed.
- Utilize staging areas as needed.
- Coordinate the implementation of clean-up strategies, assemble sampling/recovery equipment, identify disposal techniques, and assemble clean-up crews, including the sorting, storage and removal of debris from impacted areas.

ESF 4: Firefighting



- Continue public safety missions in support of restoration and recovery.
- Assess losses of state deployed firefighting equipment and personnel.
- Facilitate and coordinate reestablishment of community fire service presence.
- Gather information regarding losses of local firefighting equipment and personnel.

ESF 5: Information and Planning



- Continue to oversee and maintain documentation stream.
- Provide situational awareness of agricultural and environmental resources, cultural resources, and historic properties.
- Plan for transitional support to recovery operations.

ESF 6: Mass Care



- Continue to monitor and support the provision of shelter and feeding operations for impacted communities.
- Identify long-term recovery needs of access and functional needs populations and incorporate into recovery efforts.
- Coordinate the provision of temporary and intermediate housing.

ESF 7: Resource Support



- Coordinate with FEMA logistic support teams and resources for recovery efforts.
- Locate, purchase and coordinate delivery of resources to support recovery efforts.



ESF 8: Health and Medical

- Assess and coordinate crisis counseling services.
- Coordinate with local health providers for referral of medical and mental health issues to appropriate providers.
- Continue to coordinate with federal fatality management operations and resources.
- Coordinate with FEMA to implement Crisis Counseling Program.
- Assess the need for rostering and registering and continue epidemiologic monitoring.



ESF 9: Search and Rescue

- Establish and coordinate air mobility plan with ESF 13.
- Establish communications continuity plan with affected areas by county.



ESF 10: Hazardous Materials

- Identify and report communication requirements to support recovery operations.
- Provide technical and regulatory assistance on the interim storage or disposal of hazardous debris.
- Identify long-term environmental restoration issues.
- Coordinate with ESFs 12 and 13, US Coast Guard, and the US Environmental Protection Agency for the provision of ongoing response, consequence management, and environmental restoration activities related to hazardous materials, including chemical, biological and radiological substances.



ESF 11: Food and Water

- Assist communities with identifying alternate potable water supply sources.
- Identify and coordinate in long-term reestablishment of food/water infrastructure.
- Assist county health departments with water testing.



ESF 12: Energy

- Implement and manage statewide fuel allocation program, establish fuel points of distribution (FPODs), and initiate fuel delivery.
- Monitor and coordinate power, natural gas, and fuel restoration for recovery efforts.
- Determine initial in-state fuel availability for pre-designated priority fuel users.
- Coordinate the allocation of fuel to support mass care operations.
- Work with energy suppliers to determine their ability to implement priorities for repairs and restoration as established by Governor's Disaster Cabinet.
- Work with US Department of Energy (USDOE) to identify cascading impacts of regional damages.

ESF 13: Military Support



- Continue to support civilian authorities' requirements with aviation and airlift.
- Continue to support civilian authorities' requirements with engineering services.
- Continue to support civilian authorities' requirements with Chemical, Biological, Radiological, Nuclear and Explosives (CBRNE).
- Continue to support civilian authorities' requirements with communications.
- Continue to support civilian authorities' requirements with command and control.
- Continue to support civilian authorities' requirements with logistics.
- Continue to support civilian authorities' requirements with medical.
- Continue to support civilian authorities' requirements with maintenance.
- Continue to support civilian authorities with security.
- Continue to support civilian authorities with transportation (surface).

ESF 14: Public Information



- Coordinate public information with local, tribal, state and federal partners on assistance programs.
- Conduct and support outreach efforts on recovery programs and restoration timelines to impacted communities.

ESF 15: Volunteers and Donations



- Coordinate and integrate resources of volunteer organizations into sustained operations.
- Provide guidance and initiate tracking to assist local/tribal agencies to provide disclosure, tax information and acknowledgments to all donors.
- Track and develop material to support and recognize volunteer efforts formally.
- Prepare the long-term/sustainable plan for donations and volunteers.

ESF 16: Law Enforcement



- Re-establish the public safety system (law enforcement, juvenile and adult corrections facilities, courts and 911 services).

ESF 17: Agriculture and Animal Protection



- Continue animal sheltering operations and develop plan for long-term solutions.
- Facilitate animal reunification and rehoming.
- Coordinate with animal welfare and agricultural partners for community recovery efforts.
- Coordinate animal carcass removal and disposal operations.
- Monitor, track and develop plan for outbreaks resulting in new deaths.



ESF 18: Business and Industry

- Assess and report status of retail and business operations within Oregon and communicate recovery needs.
- Coordinate with private sector/vendors to support permanent restoration of local, tribal and state emergency communications capabilities.
- Coordinate private and government sector recovery efforts.
- Coordinate business recovery loan assistance information.
- Request feedback from ESF partners and adapt procedures to streamline processes.
- Coordinate with ESF 15 to dispatch available, trained volunteers to disaster area to assist business owners as needed.
- Coordinate economic recovery planning efforts with local, tribal, nonprofit, private sector and state and federal organizations.
- Document status of all private industry resources upon return from loaned status.
- Solicit feedback from private sector and adapt procedures to streamline processes.
- Assemble and index all incident documentation.
- Coordinate long-term recovery efforts with private sector organizations.

(This page intentionally left blank)

Contact Information/ Acronym List

Acronym List

AASF	Army Aviation Support Facility
AFRCC	Air Force Rescue Coordination Center
ADA	Americans with Disabilities Act
APHIS	Animal and Plant Health Inspection Services
ARC	American Red Cross
ATC	Air Traffic Control
ATF	Alcohol Firearms Tobacco
CAFO	Confined Animal Feeding Operations
CAT	Crisis Action Team
CAP	Civil Air Patrol
CDC	Center for Disease Control
CISAR	Catastrophic Incident Search and Rescue
COOP	Continuity of Operations Plan
COP	Common Operating Picture
C-POD	Community Points of Distribution
DHS	Department of Homeland Security
DMORT	Disaster Mortuary Response Teams
DoD	Department of Defense
EA	External Affairs
EAS	Emergency Alert System
ECC	Emergency Coordination Center
EMAC	Emergency Management Assistance Compact
EMS	Emergency Medical System
EOC	Emergency Operations Center
EPA	Environmental Protection Agency
EPLO	Emergency Preparedness Liaison Officers
ESF	Emergency Support Function
FCO	Federal Coordinating Officer
FEMA	Federal Emergency Management Agency
FPS	Federal Protective Services
FRA	Federal Railroad Administration

FSA	Forward Staging Area
GIS	Geographic Information System
HAN	Health Alert Network
HAZMAT	Hazardous Materials Teams
HHS	Health and Human Services
HOSCAP	Hospital Capacity Web System
IA	Individual Assistance
IAS	International Assistance System
IMT	Incident Management Team
IMAT	Incident Management Assistance Team
IPAWS	Integrated Public Alert and Warning System
IRSCC	Interagency Remote Sensing Coordination Cell
ISB	Incident Support Base
JFO	Joint Field Office
JIC	Joint Information Center
JOC	Joint Operations Center
JRSOI	Joint Reception, Staging, Onward Movement, and Integration
LNG	Liquefied Natural Gas
MARS	Military Auxiliary Radio System
MERS	Mobile Emergency Response Support
NCH	Natural and Cultural Resources and Historic Properties
NGB	National Guard Bureau
NGO	Non-Governmental Organizations
NOAA	National Oceanic and Atmospheric Administration
NORTHCOM	US Northern Command
ODOT	Oregon Department of Transportation
OEM	Oregon Office of Emergency Management
OERS	Oregon Emergency Response System
OMD	Oregon Military Department
OPAT	Oregon Public Affairs Team
ORNG	Oregon National Guard
ORVOAD	Oregon Volunteer Organizations Active in Disasters
OSFM	Office of State Fire Marshal
OSP	Oregon State Police

PA	Public Assistance
PHMSA	Pipeline and Hazardous Material Safety Administration
PIO	Public Information Officer
POTUS	President of the US
PPE	Personal Protective Equipment
PSA	Protective Security Advisor
RACES	Radio Amateur Civil Emergency Service
RAID	Rapid Assessment and Initial Detection
REDIS	Regional Disability Integration Specialists
RFI	Request for Information
ROWPU	Reverse Osmosis Water Purification Unit
RRCC	Regional Response Coordination Center
RSC	Regional Support Command
RSOI	Reception, Staging, Onward Movement, Integration
SAR	Search and Rescue
SCADA	Supervisory Control and Data Acquisition
SCO	State Coordinating Officer
SEPLO	State Emergency Preparedness Liaison Officer
SNAP	Supplemental Nutrition Assistance
SERV-OR	State Emergency Registry of Volunteers in Oregon
SNS	Strategic National Stockpile
SoS	Secretary of State
TAG	The Adjutant General
USACE	US Army Corps of Engineers
USAID	US Agency for International Development
USAR	Urban Search and Rescue
USCG	US Coast Guard
USDA	US Department of Agriculture
VOAD	Voluntary Organizations Active in Disaster

(This page intentionally left blank)

Oregon ESF Agency Table

Effective Date: 10 October 2018

Key:

▲ – Primary

● – Support

◇ – Adjunct

	1	2	3	4	5	6	7	8	9	10	11	12	13	14	15	16	17	18
	Transportation	Communications	Public Works	Firefighting	Information and Planning*	Mass Care	Resource Support	Health and Medical	Search and Rescue	Hazardous Materials	Food and Water	Energy	Military Support	Public Information**	Volunteers and Donations	Law Enforcement	Agriculture and Animal Protection	Business and Industry
Administrative Services (DAS)	●	▲	●			●	▲	●			●	●		●	●	●		
Agriculture (ODA)						●	▲	●			●			●			▲	
Aviation (AERO)	●								●									
Business Development Dept (OBDD)		◇	●															▲
Consumer and Business Services (DCBS)			●					●		●					●			●
Corrections (DOC)	●										●					●		
Education (ODE)						●					●							
Emergency Management (OEM)		●			▲				▲				●	▲	▲		●	●
Employment Department (OED)																		●
Energy (ODOE)	●											▲		●				
Environmental Quality (DEQ)			●							▲	●			●			●	
Fish and Wildlife (ODFW)								●		●	●						●	
Forestry (ODF)	●	●		▲			●			●	●			●			●	
Geology and Mineral Industry (DOGAMI)			●															
Health Authority (OHA)						●		▲		●	●	●		●	●		●	
Housing and Community Services (OHCS)						●					●							
Human Services (DHS)						▲		●		●	▲	●		●				
Judicial Department (OJD)																●		
Justice (DOJ)																●		
Land Conservation & Development (DLCD)																		●
Military Department (OMD)	●	●	●	●		●	●	●	●		●	●	▲	●		●		
Public Safety Standards & Training (DPSST)																		
Public Utility Commission (OPUC)		▲										▲		●				
Secretary of State (SecState)																		●
State Lands (DSL)	●		●							●							●	
State Police (OSP)	●	●								●				●		▲	●	
State Fire Marshal		●		▲					●	▲				●				
Transportation (ODOT)	▲	●	▲				●		●	●		●		●	●			
Travel Oregon																		●
Veteran's Affairs (ODVA)						●												
Water Resources Department (WRD)			●								●							
American Red Cross						◇		◇	◇		◇				◇			
Amateur Radio Services		◇																
Civil Air Patrol	◇	◇					◇		◇									
Oregon Food Bank						◇					◇							
ORVOAD						◇									◇			
ORWARN			◇															

*-Numerous agencies contribute to ESF 5-Information & Planning, but OEM sets the structure of the ESF.

** -Similar to ESF 5, numerous agencies contribute to ESF 14 on an adjunct basis, but are not listed here.



Version 3.0, Revised 10/2018

**This version of the Cascadia Playbook is a work in progress. Oregon's Office of Emergency Management is committed to making this a useful document and welcomes suggested edits and recommendations to improve its functionality. Please send suggestions to deputy@oem.state.or.us.*

